

MITOFUSIN 1 RABBIT MAB

Cat.#: N263426

Product Name: Anti-Mitofusin 1 Rabbit Monoclonal Antibody

Synonyms: HR2; mKIAA4032; D3ErtD265e; 2310002F04Rik; 6330416C07Rik

UNIPROT ID: Q8R4Z9

Background: Mitochondrial outer membrane GTPase that mediates mitochondrial clustering and fusion.

Immunogen: A synthetic peptide of rat Mitofusin 1

Applications: WB,IP

Recommended Dilutions: WB: 1/500-1/1000 IP: 1/20

Host Species: Rabbit

Clonality: Rabbit Monoclonal

Clone ID: R05-3A8

MW: Calculated MW: 84 kDa; Observed MW: 84 kDa

Isotype: IgG

Purification: Affinity Purified

Species Reactivity: Mouse,Rat,Hamster

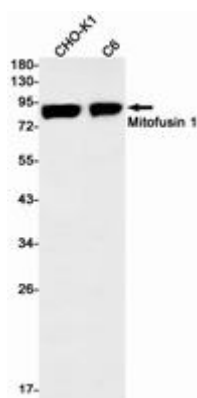
Conjugation: Unconjugated

Modification: Unmodified

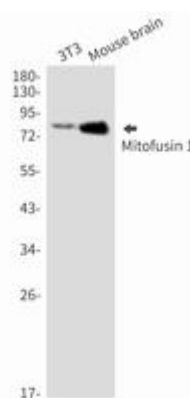
Constituents: PBS (without Mg²⁺ and Ca²⁺), pH 7.3 containing 50% glycerol, 0.5% BSA and 0.02% sodium azide

Research Areas: Neuroscience

Storage & Shipping: Store at -20°C. Avoid repeated freezing and thawing



Western blot analysis of Mitofusin 1 in CHO-K1, C6 lysates using Mitofusin 1 antibody.



Western blot analysis of Mitofusin 1 in 3T3, mouse brain lysates using Mitofusin 1 antibody.



Product Description

Pioneering GTPase and Oncogene Product Development since 2010
