

MITOCHONDRIAL RIBOSOMAL PROTEIN L11 RABBIT MAB

Cat.#: N262519

Product Name: Anti-Mitochondrial Ribosomal Protein L11 Rabbit Monoclonal Antibody

Synonyms: MRPL11; CGI-113; 39S ribosomal protein L11; mitochondrial; L11mt; MRP-L11

UNIPROT ID: Q9Y3B7

Background: This nuclear gene encodes a 39S subunit component of the mitochondrial ribosome. Alternative splicing results in multiple transcript variants. Pseudogenes for this gene are found on chromosomes 5 and 12.

Immunogen: A synthetic peptide of human Mitochondrial ribosomal protein L11

Applications: WB,IHC-F,IHC-P,ICC/IF

Recommended Dilutions: WB: 1/500-1/1000 IHC: 1/50-1/100 IF: 1/50-1/200

Host Species: Rabbit

Clonality: Rabbit Monoclonal

Clone ID: R06-4H1

MW: Calculated MW: 21 kDa; Observed MW: 21 kDa

Isotype: IgG

Purification: Affinity Purified

Species Reactivity: Human

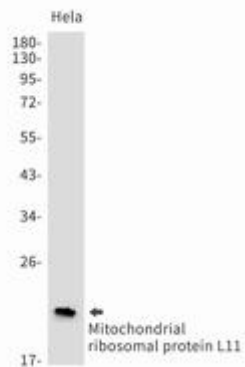
Conjugation: Unconjugated

Modification: Unmodified

Constituents: PBS (without Mg²⁺ and Ca²⁺), pH 7.3 containing 50% glycerol, 0.5% BSA and 0.02% sodium azide

Research Areas: Cell Biology

Storage & Shipping: Store at -20°C. Avoid repeated freezing and thawing



Western blot analysis of Mitochondrial ribosomal protein L11 in HeLa lysates using Mitochondrial Ribosomal Protein L11 antibody.