

## MITOCHONDRIAL FISSION 1 PROTEIN RABBIT MAB

**Cat.#:** N263034

**Product Name:** Anti-Mitochondrial Fission 1 Protein Rabbit Monoclonal Antibody

**Synonyms:** CGI135; FIS1; hFis1; TTC 11

**UNIPROT ID:** Q9Y3D6

**Background:** Promotes the fragmentation of the mitochondrial network and its perinuclear clustering. Can induce cytochrome c release from the mitochondrion to the cytosol, ultimately leading to apoptosis. Also mediates peroxisomal fission.

**Immunogen:** A synthetic peptide of human TTC11

**Applications:** WB,IHC-F,IHC-P,ICC/IF

**Recommended Dilutions:** WB: 1/500-1/1000 IHC: 1/50-1/100 IF: 1/50-1/200

**Host Species:** Rabbit

**Clonality:** Rabbit Monoclonal

**Clone ID:** R02-8G8

**MW:** Calculated MW: 17 kDa; Observed MW: 17 kDa

**Isotype:** IgG

**Purification:** Affinity Purified

**Species Reactivity:** Human

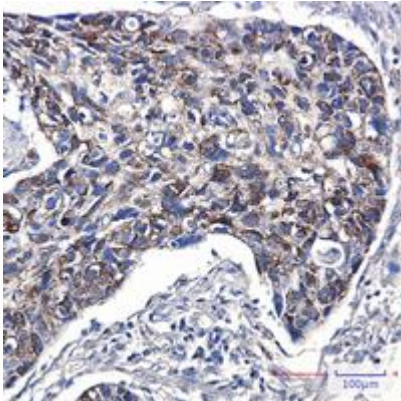
**Conjugation:** Unconjugated

**Modification:** Unmodified

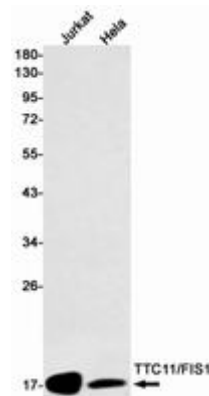
**Constituents:** PBS (without Mg<sup>2+</sup> and Ca<sup>2+</sup>), pH 7.3 containing 50% glycerol, 0.5% BSA and 0.02% sodium azide

**Research Areas:** Cell Biology

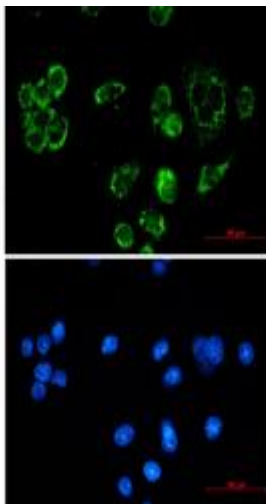
**Storage & Shipping:** Store at -20°C. Avoid repeated freezing and thawing



Immunohistochemistry analysis of paraffin-embedded Human lung cancer using TTC11 antibody. High-pressure and temperature Sodium Citrate pH 6.0 was used for antigen retrieval.



Western blot analysis of TTC11/FIS1 in Jurkat, Hela lysates using Sodium Mitochondrial Fission 1 Protein antibody.



Immunocytochemistry analysis of TTC11/FIS1 (green) in MCF-7 using TTC11/FIS1 antibody, and DAPI (blue)