

## MIF4GD RABBIT PAB

**Cat.#:** S218217

**Product Name:** Anti-MIF4GD Rabbit Polyclonal Antibody

**Synonyms:** MIFD; AD023; SLI1

**UNIPROT ID:** A9UHW6 (Gene Accession - BC033759 )

**Background:** This gene encodes a protein which interacts with the N-terminus of the stem-loop binding protein (SLBP) and the 3' end of histone mRNA. This interaction facilitates the activation of histone mRNA translation. Alternative splicing results in multiple transcript variants encoding different isoforms.

**Immunogen:** Fusion protein of human MIF4GD

**Applications:** ELISA, WB, IHC

**Recommended Dilutions:** IHC: 50-200;WB: 500-2000;ELISA: 5000-10000

**Host Species:** Rabbit

**Clonality:** Rabbit Polyclonal

**Isotype:** Immunogen-specific rabbit IgG

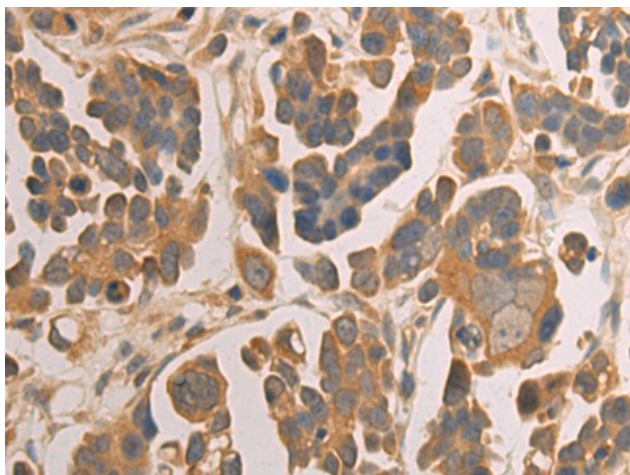
**Purification:** Antigen affinity purification

**Species Reactivity:** Human

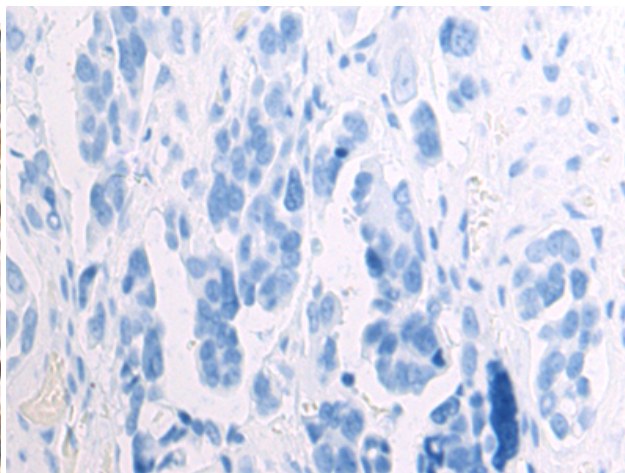
**Constituents:** PBS (without Mg<sup>2+</sup> and Ca<sup>2+</sup>), pH 7.4, 150 mM NaCl, 0.05% Sodium Azide and 40% glycerol

**Research Areas:** Cell Biology

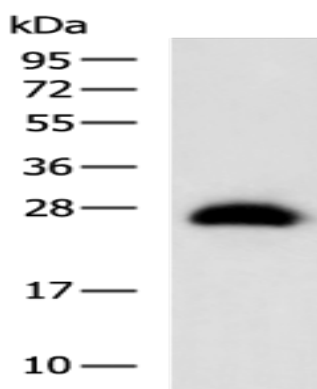
**Storage & Shipping:** Store at -20°C. Avoid repeated freezing and thawing



Immunohistochemistry analysis of paraffin embedded Human colorectal cancer tissue using 218217 (MIF4GD Antibody) at a dilution of 1/70 (Cytoplasm).



In comparison with the IHC on the left, the same paraffin-embedded Human colorectal cancer tissue is first treated with the fusion protein and then with 218217 (Anti-MIF4GD Antibody) at dilution 1/70.



Gel: 12% SDS-PAGE, Lysate: 40  $\mu$ g;  
Lane: 293T cell lysate;  
Primary antibody: 218217 (MIF4GD Antibody) at dilution 1/550;  
Secondary antibody: HRP-conjugated Goat anti rabbit IgG at 1/5000 dilution;  
Exposure time: 2 seconds