

## MIER1 RABBIT PAB

**Cat.#:** S218544

**Product Name:** Anti-MIER1 Rabbit Polyclonal Antibody

**Synonyms:** ERI; MI-ER1

**UNIPROT ID:** Q8N108 (Gene Accession - BC017423 )

**Background:** This gene encodes a protein that was first identified in *Xenopus laevis* by its role in a mesoderm induction early response (MIER). The encoded protein functions as a transcriptional regulator. Alternatively spliced transcript variants encode multiple isoforms, some of which lack a C-terminal nuclear localization signal.

**Immunogen:** Fusion protein of human MIER1

**Applications:** ELISA, IHC

**Recommended Dilutions:** IHC: 100-200; ELISA: 5000-10000

**Host Species:** Rabbit

**Clonality:** Rabbit Polyclonal

**Isotype:** Immunogen-specific rabbit IgG

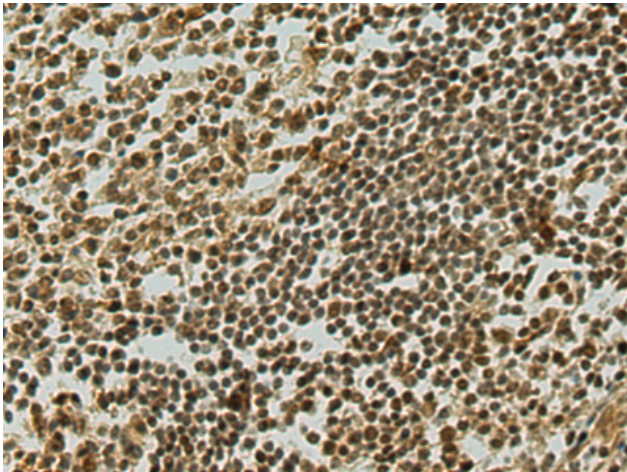
**Purification:** Antigen affinity purification

**Species Reactivity:** Human, Mouse

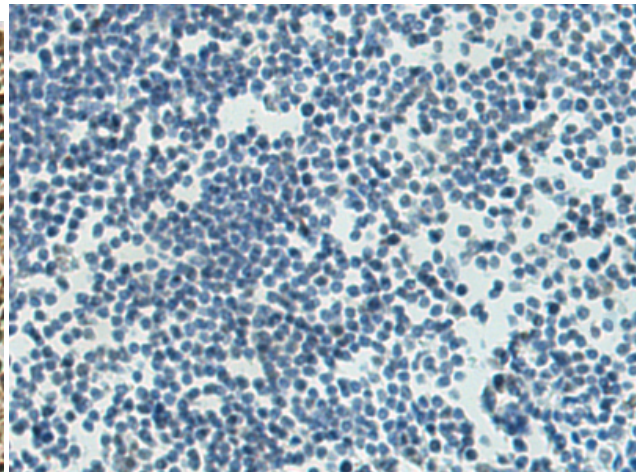
**Constituents:** PBS (without Mg<sup>2+</sup> and Ca<sup>2+</sup>), pH 7.4, 150 mM NaCl, 0.05% Sodium Azide and 40% glycerol

**Research Areas:** Epigenetics and Nuclear Signaling

**Storage & Shipping:** Store at -20°C. Avoid repeated freezing and thawing



Immunohistochemistry analysis of paraffin embedded Human tonsil tissue using 218544(MIER1 Antibody) at a dilution of 1/80(Nucleus).



In comparison with the IHC on the left, the same paraffin-embedded Human tonsil tissue is first treated with the fusion protein and then with 218544(Anti-MIER1 Antibody) at dilution 1/80.