

MIDKINE RABBIT MAB

Cat.#: N261556

Product Name: Anti-Midkine Rabbit Monoclonal Antibody

Synonyms: MDK; FLJ27379; MK1; NEGF2; Midkine; NEGF2; ARAP

UNIPROT ID: P21741

Background: Midkine, or MK, is a heparin-binding molecule involved in the regulation of growth and differentiation during embryogenesis. MK expression is tightly regulated during embryonic development by steroid receptors of the retinoic acid superfamily. The mature human MK protein is 118 amino acids in length and contains five intrachain disulfide bonds. MK is a non-glycosylated protein that shows greater than 87% identity between human and mouse.

Immunogen: A synthetic peptide of human Midkine

Applications: WB,IP

Recommended Dilutions: WB: 1/500-1/1000 IP: 1/20

Host Species: Rabbit

Clonality: Rabbit Monoclonal

Clone ID: R06-4B2

MW: Calculated MW: 16 kDa; Observed MW: 16 kDa

Isotype: IgG

Purification: Affinity Purified

Species Reactivity: Human

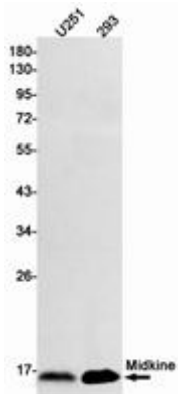
Conjugation: Unconjugated

Modification: Unmodified

Constituents: PBS (without Mg²⁺ and Ca²⁺), pH 7.3 containing 50% glycerol, 0.5% BSA and 0.02% sodium azide

Research Areas: Neuroscience

Storage & Shipping: Store at -20°C. Avoid repeated freezing and thawing



Western blot analysis of Midkine in U251, 293 lysates using Midkine antibody.