

MICU3 RABBIT PAB

Cat.#: S221930

Product Name: Anti-MICU3 Rabbit Polyclonal Antibody

Synonyms: EFHA2

UNIPROT ID: Q86XE3 (Gene Accession - NP_859074)

Background: May play a role in mitochondrial calcium uptake.

Immunogen: Synthetic peptide of human MICU3

Applications: ELISA, IHC

Recommended Dilutions: IHC: 25-100; ELISA: 5000-10000

Host Species: Rabbit

Clonality: Rabbit Polyclonal

Isotype: Immunogen-specific rabbit IgG

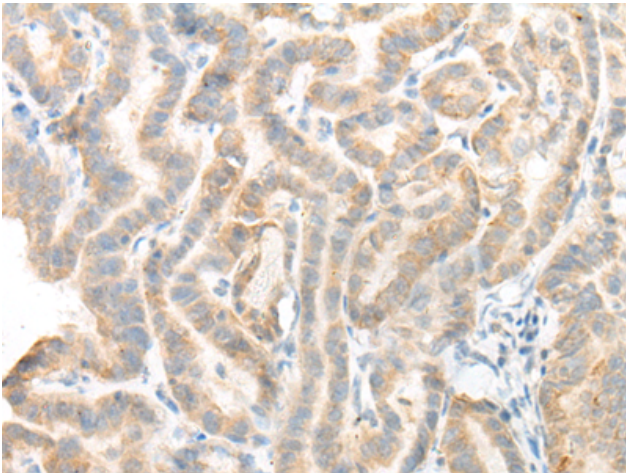
Purification: Antigen affinity purification

Species Reactivity: Human

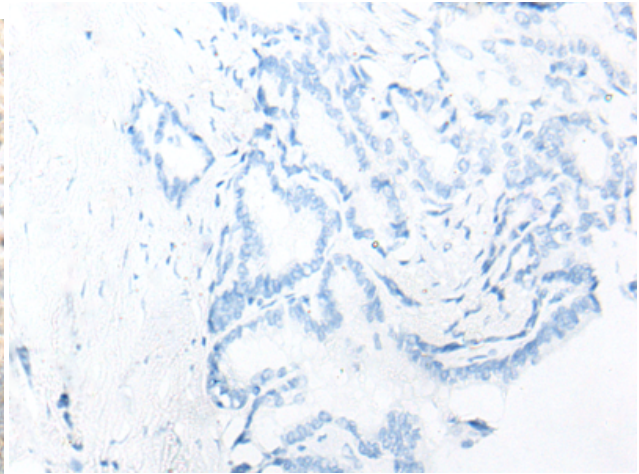
Constituents: PBS (without Mg²⁺ and Ca²⁺), pH 7.4, 150 mM NaCl, 0.05% Sodium Azide and 40% glycerol

Research Areas: Signal Transduction

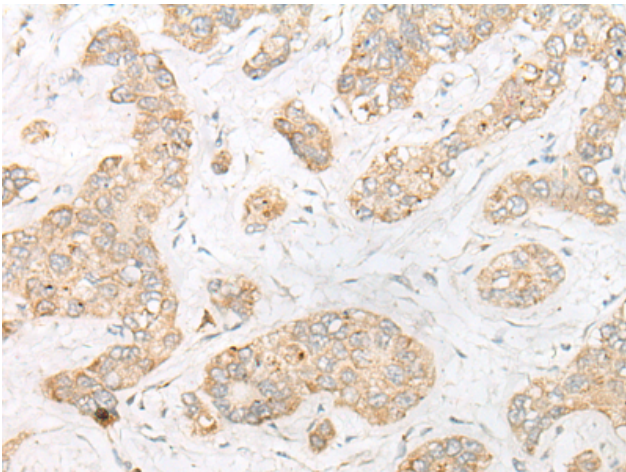
Storage & Shipping: Store at -20°C. Avoid repeated freezing and thawing



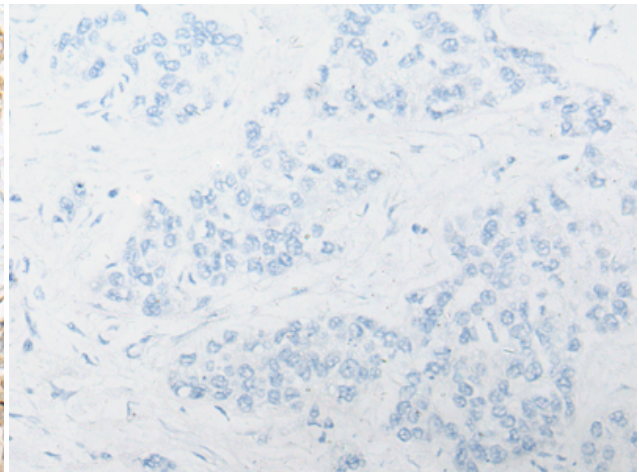
Immunohistochemistry analysis of paraffin embedded Human thyroid cancer tissue using 221930(MICU3 Antibody) at a dilution of 1/20(Cell membrane).



In comparison with the IHC on the left, the same paraffin-embedded Human thyroid cancer tissue is first treated with the synthetic peptide and then with 221930(Anti-MICU3 Antibody) at dilution 1/20.



The image on the left is immunohistochemistry of paraffin-embedded Human liver cancer tissue using 221930(Anti-MICU3 Antibody) at a dilution of 1/20.



In comparison with the IHC on the left, the same paraffin-embedded Human liver cancer tissue is first treated with synthetic peptide and then with D263760(Anti-MICU3 Antibody) at dilution 1/20.