

MIA RABBIT PAB

Cat.#: N225145

Product Name: Anti-MIA Rabbit pAb

Synonyms: Melanoma-derived growth regulatory protein (Melanoma inhibitory activity protein)

UNIPROT ID: Q16674

Background: Elicits growth inhibition on melanoma cells in vitro as well as some other neuroectodermal tumors, including gliomas.

Immunogen: Synthetic peptide from human protein at AA range: 90-131

Applications: IHC-P,ELISA

Recommended Dilutions: IHC: 1/50-1/100 ELISA: 1/10000

Host Species: Rabbit

Clonality: Rabbit Polyclonal

Clone ID: -

MW: -

Isotype: IgG

Purification: Affinity Purified

Species Reactivity: Human

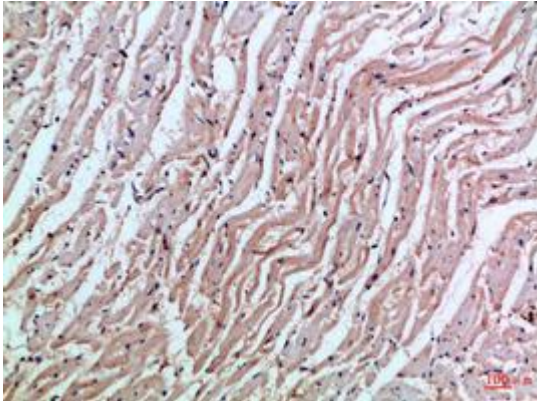
Conjugation: Unconjugated

Modification: Unmodified

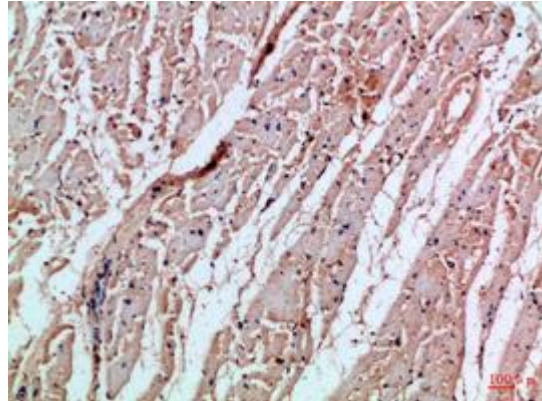
Constituents: PBS (without Mg²⁺ and Ca²⁺), pH 7.3 containing 50% glycerol, 0.5% BSA and 0.02% sodium azide

Research Areas: Signal Transduction

Storage & Shipping: Store at -20°C. Avoid repeated freezing and thawing



Immunohistochemical analysis of paraffin-embedded Human tonsils using MIA antibody. High-pressure and temperature Sodium Citrate pH 6.0 was used for antigen retrieval.



Immunohistochemistry analysis of paraffin-embedded Human heart using MIA antibody. High-pressure and temperature Sodium Citrate pH 6.0 was used for antigen retrieval.