

METTL17 RABBIT PAB

Cat.#: S221999

Product Name: Anti-METTL17 Rabbit Polyclonal Antibody

Synonyms: METT1D1

UNIPROT ID: Q9H7H0 (Gene Accession - NP_073571)

Background: May be a component of the mitochondrial small ribosomal subunit.

Immunogen: Synthetic peptide of human METTL17

Applications: ELISA, WB, IHC

Recommended Dilutions: IHC: 20-100;WB: 500-2000;ELISA: 5000-10000

Host Species: Rabbit

Clonality: Rabbit Polyclonal

Isotype: Immunogen-specific rabbit IgG

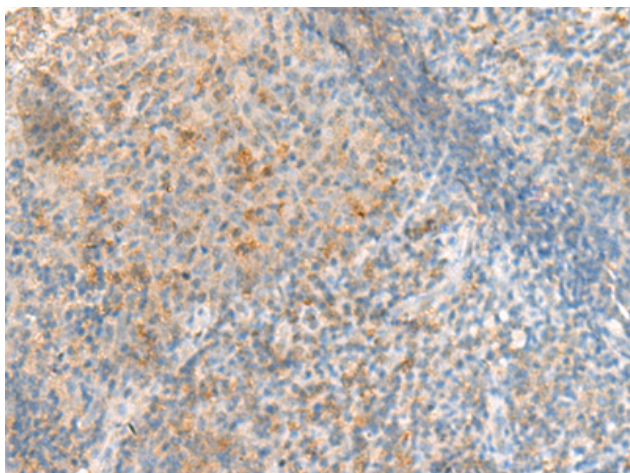
Purification: Antigen affinity purification

Species Reactivity: Human, Mouse

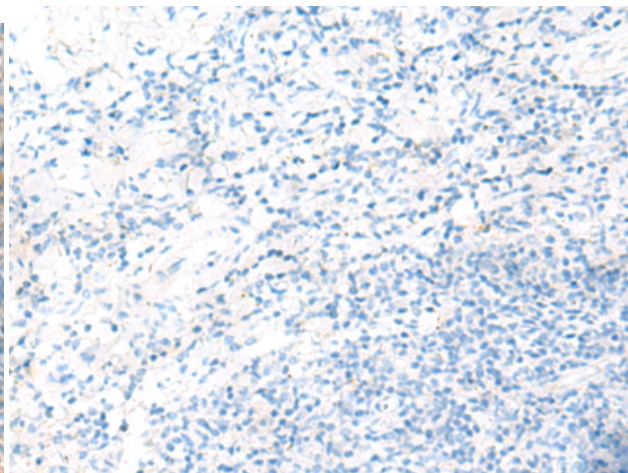
Constituents: PBS (without Mg²⁺ and Ca²⁺), pH 7.4, 150 mM NaCl, 0.05% Sodium Azide and 40% glycerol

Research Areas: Epigenetics and Nuclear Signaling

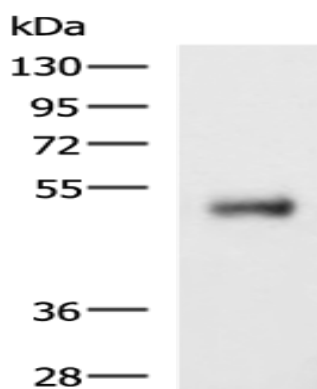
Storage & Shipping: Store at -20°C. Avoid repeated freezing and thawing



Immunohistochemistry analysis of paraffin embedded Human tonsil tissue using 221999(METTL17 Antibody) at a dilution of 1/50(Cytoplasm).



In comparison with the IHC on the left, the same paraffin-embedded Human tonsil tissue is first treated with the synthetic peptide and then with 221999(Anti-METTL17 Antibody) at dilution 1/50.



Gel: 8%SDS-PAGE, Lysate: 40 μ g;
Lane: Human colorectal cancer tissue lysate;
Primary antibody: 221999(METTL17 Antibody)
at dilution 1/800;
Secondary antibody: HRP-conjugated Goat
anti rabbit IgG at 1/5000 dilution;
Exposure time: 5 minutes