

## METALLOPROTEINASE INHIBITOR 1 RABBIT PAB

**Cat.#:** N225408

**Product Name:** Anti-Metalloproteinase Inhibitor 1 Rabbit pAb

**Synonyms:** TIMP1; CLGI; TIMP; Metalloproteinase inhibitor 1; Erythroid-potentiating activity; EPA; Fibroblast collagenase inhibitor; Collagenase inhibitor; Tissue inhibitor of metalloproteinases 1; TIMP-1

**UNIPROT ID:** P01033

**Background:** TIMP1 Complexes with metalloproteinases (such as collagenases) and irreversibly inactivates them by binding to their catalytic zinc cofactor. Also mediates erythropoiesis in vitro; but, unlike IL-3, it is species-specific, stimulating the growth and differentiation of only human and murine erythroid progenitors. Known to act on MMP-1, MMP-2, MMP-3, MMP-7, MMP-8, MMP-9, MMP-10, MMP-11, MMP-12, MMP-13 and MMP-16.

**Immunogen:** The antiserum was produced against synthesized peptide derived from human TIMP1. AA range:61-110

**Applications:** ICC/IF, WB, IHC-F, IHC-P, ELISA

**Recommended Dilutions:** WB: 1/500-1/1000 IHC: 1/50-1/100 IF: 1/50-1/200  
ELISA: 1/10000

**Host Species:** Rabbit

**Clonality:** Rabbit Polyclonal

**Clone ID:** -

**MW:** Calculated MW: 23 kDa; Observed MW: 23 kDa

**Isotype:** IgG

**Purification:** Affinity Purified

**Species Reactivity:** Human, Mouse, Rat

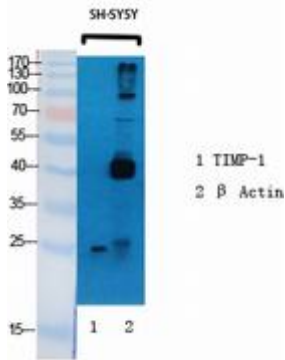
**Conjugation:** Unconjugated

**Modification:** Unmodified

**Constituents:** PBS (without Mg<sup>2+</sup> and Ca<sup>2+</sup>), pH 7.3 containing 50% glycerol, 0.5% BSA and 0.02% sodium azide

**Research Areas:** Cardiovascular

**Storage & Shipping:** Store at -20°C. Avoid repeated freezing and thawing



Western blot analysis of Metalloproteinase Inhibitor 1 in various lysates using Metalloproteinase Inhibitor 1 antibody.