

MEK3/MEK6 RABBIT PAB

Cat.#: N225725

Product Name: Anti-MEK3/MEK6 Rabbit pAb

Synonyms: MEK6; MKK6; MAPKK6; PRKMK6; SAPKK3; MAP2K6; MEK3; MAP kinase kinase 3; MAPKK3; MAPK/ERK kinase 3

UNIPROT ID: P46734/P52564

Background: Dual specificity kinase. Is activated by cytokines and environmental stress in vivo. Catalyzes the concomitant phosphorylation of a threonine and a tyrosine residue in the MAP kinase p38.

Immunogen: A synthesized peptide derived from human MEK3/MEK6

Applications: WB,IHC-P,ICC/IF,IP,FC

Recommended Dilutions: WB: 1/500-1/1000 IHC: 1/50-1/100 IF: 1/50-1/200 IP: 1/20 FC: 1/50-1/100

Host Species: Rabbit

Clonality: Rabbit Polyclonal

Clone ID: -

MW: Calculated MW: 39,37 kDa; Observed MW: 39,37 kDa

Isotype: IgG

Purification: Affinity Chromatography

Species Reactivity: Human,Mouse,Rat

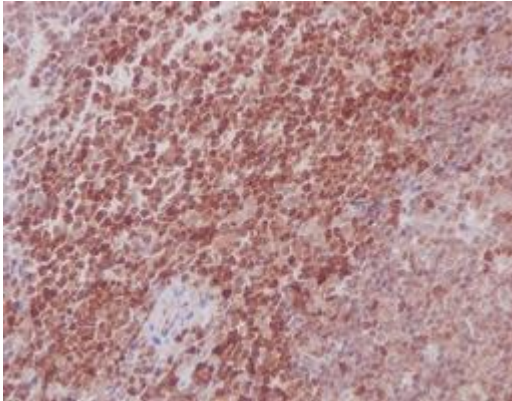
Conjugation: Unconjugated

Modification: Unmodified

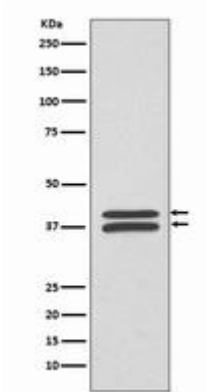
Constituents: PBS (without Mg²⁺ and Ca²⁺), pH 7.3 containing 50% glycerol, 0.5% BSA and 0.02% sodium azide

Research Areas: Signal Transduction

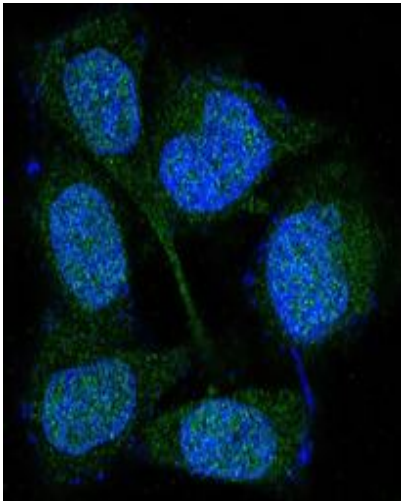
Storage & Shipping: Store at -20°C. Avoid repeated freezing and thawing



Immunohistochemistry analysis of paraffin-embedded mouse spleen using MEK3/MEK6 antibody. High-pressure and temperature Sodium Citrate pH 6.0 was used for antigen retrieval.



Western blot analysis of MEK3/MEK6 in HeLa lysates using MEK3/MEK6 antibody.



Immunofluorescence analysis of MEK3/MEK6 in HeLa using MEK3/MEK6 antibody.