

MEF2A RABBIT PAB

Cat.#: S215231

Product Name: Anti-MEF2A Rabbit Polyclonal Antibody

Synonyms: mef2; ADCAD1; RSRFC4; RSRFC9

UNIPROT ID: Q02078 (Gene Accession - NP_005578)

Background: The protein encoded by this gene is a DNA-binding transcription factor that activates many muscle-specific, growth factor-induced, and stress-induced genes. The encoded protein can act as a homodimer or as a heterodimer and is involved in several cellular processes, including muscle development, neuronal differentiation, cell growth control, and apoptosis. Defects in this gene could be a cause of autosomal dominant coronary artery disease 1 with myocardial infarction (ADCAD1). Several transcript variants encoding different isoforms have been found for this gene.

Immunogen: Synthetic peptide of human MEF2A

Applications: ELISA, IHC

Recommended Dilutions: IHC: 25-100; ELISA: 5000-10000

Host Species: Rabbit

Clonality: Rabbit Polyclonal

Isotype: Immunogen-specific rabbit IgG

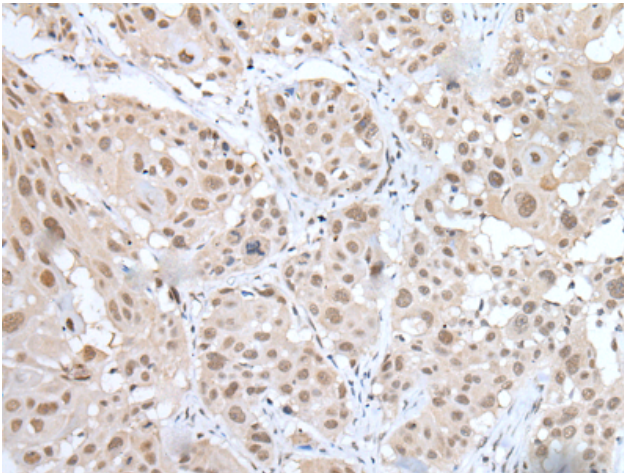
Purification: Antigen affinity purification

Species Reactivity: Human, Mouse, Rat

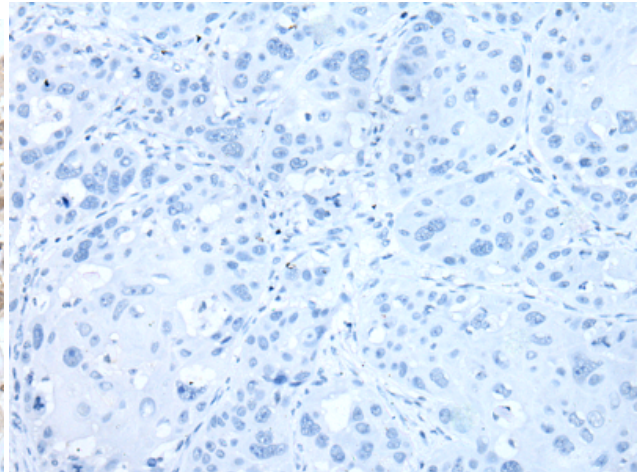
Constituents: PBS (without Mg²⁺ and Ca²⁺), pH 7.4, 150 mM NaCl, 0.05% Sodium Azide and 40% glycerol

Research Areas: Signal Transduction, Epigenetics and Nuclear Signaling, Neuroscience, Cardiovascular, Stem Cells

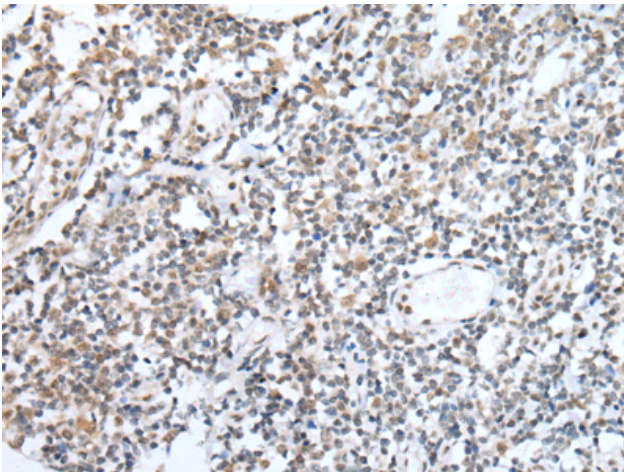
Storage & Shipping: Store at -20°C. Avoid repeated freezing and thawing



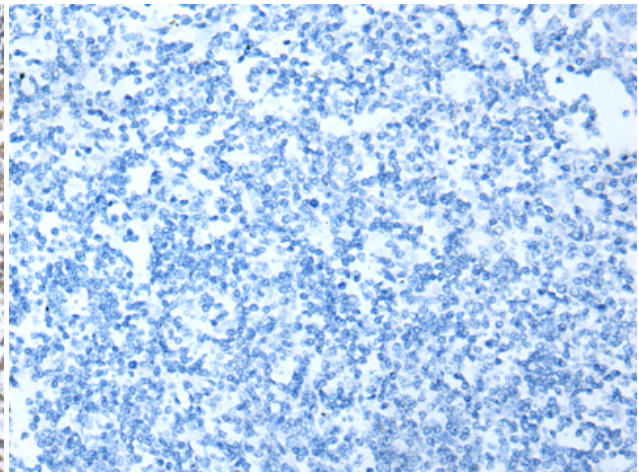
Immunohistochemistry analysis of paraffin embedded Human esophagus cancer tissue using 215231 (MEF2A Antibody) at a dilution of 1/30 (Nucleus).



In comparison with the IHC on the left, the same paraffin-embedded Human esophagus cancer tissue is first treated with the synthetic peptide and then with 215231 (Anti-MEF2A Antibody) at dilution 1/30.



The image on the left is immunohistochemistry of paraffin-embedded Human tonsil tissue using 215231 (Anti-MEF2A Antibody) at a dilution of 1/30.



In comparison with the IHC on the left, the same paraffin-embedded Human tonsil tissue is first treated with synthetic peptide and then with D163068 (Anti-MEF2A Antibody) at dilution 1/30.