

## MEF2A RABBIT MAB

**Cat.#:** N262502

**Product Name:** Anti-MEF2A Rabbit Monoclonal Antibody

**Synonyms:** mef2; ADCAD1; RSRFC4; RSRFC9

**UNIPROT ID:** Q02078

**Background:** Transcriptional activator which binds specifically to the MEF2 element, 5'-YTA[AT]4TAR-3', found in numerous muscle-specific genes. Also involved in the activation of numerous growth factor- and stress-induced genes. Mediates cellular functions not only in skeletal and cardiac muscle development, but also in neuronal differentiation and survival. Plays diverse roles in the control of cell growth, survival and apoptosis via p38 MAPK signaling in muscle-specific and/or growth factor-related transcription. In cerebellar granule neurons, phosphorylated and sumoylated MEF2A represses transcription of NUR77 promoting synaptic differentiation. Associates with chromatin to the ZNF16 promoter.

**Immunogen:** A synthetic peptide of human MEF2A

**Applications:** WB, ICC/IF

**Recommended Dilutions:** WB: 1/500-1/1000 IF: 1/50-1/200

**Host Species:** Rabbit

**Clonality:** Rabbit Monoclonal

**Clone ID:** R04-2C8

**MW:** Calculated MW: 55 kDa; Observed MW: 55 kDa

**Isotype:** IgG

**Purification:** Affinity Purified

**Species Reactivity:** Human, Mouse, Rat

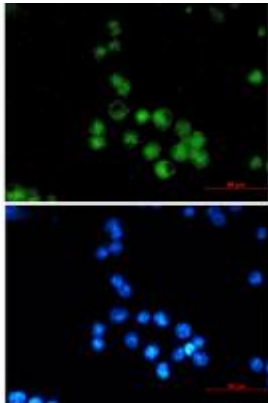
**Conjugation:** Unconjugated

**Modification:** Unmodified

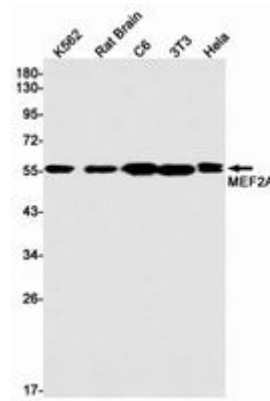
**Constituents:** PBS (without Mg<sup>2+</sup> and Ca<sup>2+</sup>), pH 7.3 containing 50% glycerol, 0.5% BSA and 0.02% sodium azide

**Research Areas:** Signal Transduction

**Storage & Shipping:** Store at -20°C. Avoid repeated freezing and thawing



Immunocytochemistry analysis of MEF2A (green) in MCF-7 using MEF2A antibody, and DAPI (blue)



Western blot analysis of MEF2A in K562, rat Brain, C6, 3T3, HeLa lysates using MEF2A antibody.