

## MEDAG RABBIT PAB

**Cat.#:** S221637

**Product Name:** Anti-MEDAG Rabbit Polyclonal Antibody

**Synonyms:** AWMS3; MEDA4; MEDA-4; hAWMS3; C13orf33

**UNIPROT ID:** Q5VYS4 (Gene Accession - NP\_116238 )

**Background:** Involved in processes that promote adipocyte differentiation, lipid accumulation, and glucose uptake in mature adipocytes.

**Immunogen:** Synthetic peptide of human MEDAG

**Applications:** ELISA, WB, IHC

**Recommended Dilutions:** IHC: 50-300;WB: 500-2000;ELISA: 5000-10000

**Host Species:** Rabbit

**Clonality:** Rabbit Polyclonal

**Isotype:** Immunogen-specific rabbit IgG

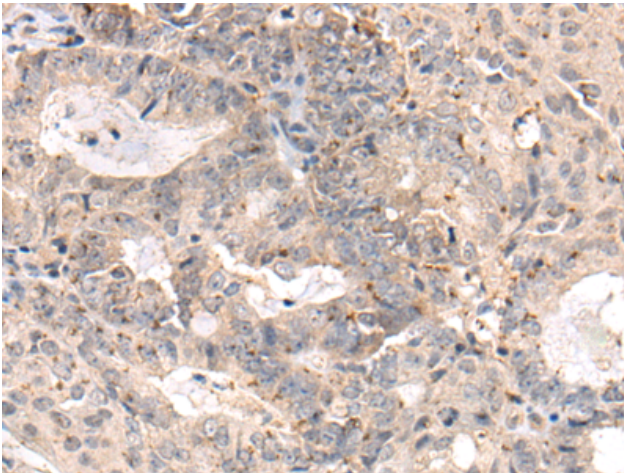
**Purification:** Antigen affinity purification

**Species Reactivity:** Human, Mouse

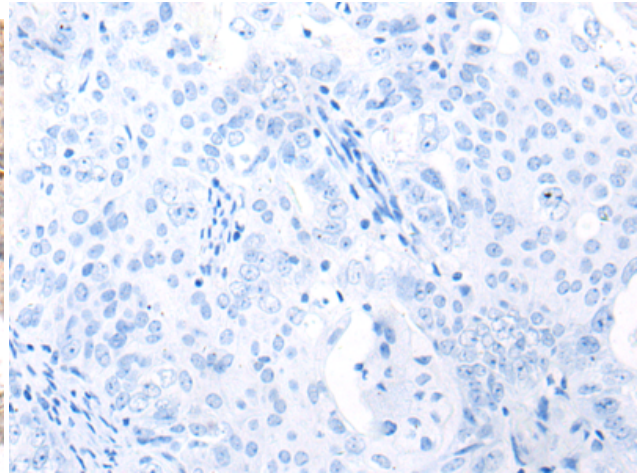
**Constituents:** PBS (without Mg<sup>2+</sup> and Ca<sup>2+</sup>), pH 7.4, 150 mM NaCl, 0.05% Sodium Azide and 40% glycerol

**Research Areas:** Metabolism

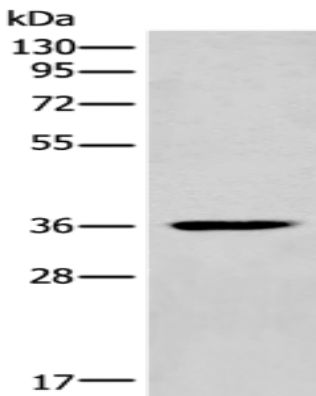
**Storage & Shipping:** Store at -20°C. Avoid repeated freezing and thawing



Immunohistochemistry analysis of paraffin embedded Human ovarian cancer tissue using 221637(MEDAG Antibody) at a dilution of 1/75(Cytoplasm).



In comparison with the IHC on the left, the same paraffin-embedded Human ovarian cancer tissue is first treated with the synthetic peptide and then with 221637(Anti-MEDAG Antibody) at dilution 1/75.



Gel: 8%SDS-PAGE, Lysate: 40  $\mu$ g;  
Lane: Mouse heart tissue lysate;  
Primary antibody: 221637(MEDAG Antibody) at dilution 1/700;  
Secondary antibody: Goat anti rabbit IgG at 1/8000 dilution;  
Exposure time: 30 seconds