

MED31 RABBIT PAB

Cat.#: S219201

Product Name: Anti-MED31 Rabbit Polyclonal Antibody

Synonyms: Sohl; CGI-125; 3110004H13Rik

UNIPROT ID: Q9Y3C7 (Gene Accession - BC012539)

Background: Component of the Mediator complex, a coactivator involved in the regulated transcription of nearly all RNA polymerase II-dependent genes. Mediator functions as a bridge to convey information from gene-specific regulatory proteins to the basal RNA polymerase II transcription machinery. Mediator is recruited to promoters by direct interactions with regulatory proteins and serves as a scaffold for the assembly of a functional preinitiation complex with RNA polymerase II and the general transcription factors.

Immunogen: Fusion protein of human MED31

Applications: ELISA, IHC

Recommended Dilutions: IHC: 100-300; ELISA: 5000-10000

Host Species: Rabbit

Clonality: Rabbit Polyclonal

Isotype: Immunogen-specific rabbit IgG

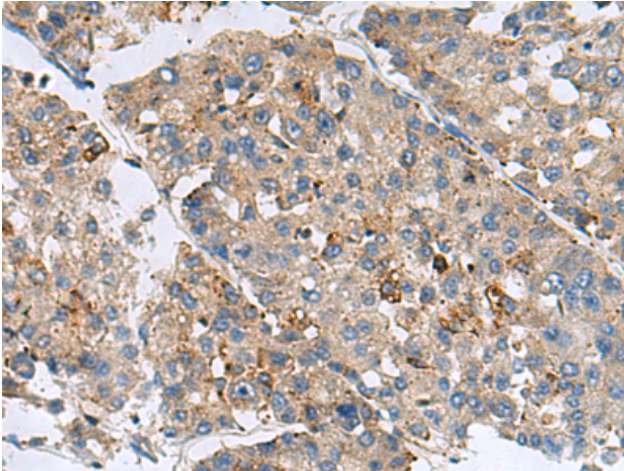
Purification: Antigen affinity purification

Species Reactivity: Human, Mouse

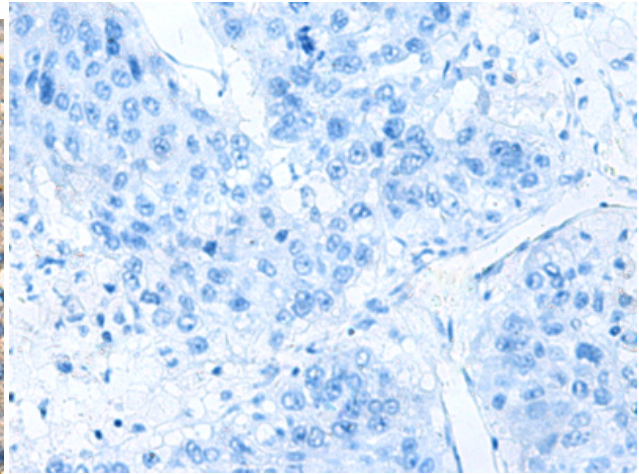
Constituents: PBS (without Mg²⁺ and Ca²⁺), pH 7.4, 150 mM NaCl, 0.05% Sodium Azide and 40% glycerol

Research Areas: Epigenetics and Nuclear Signaling

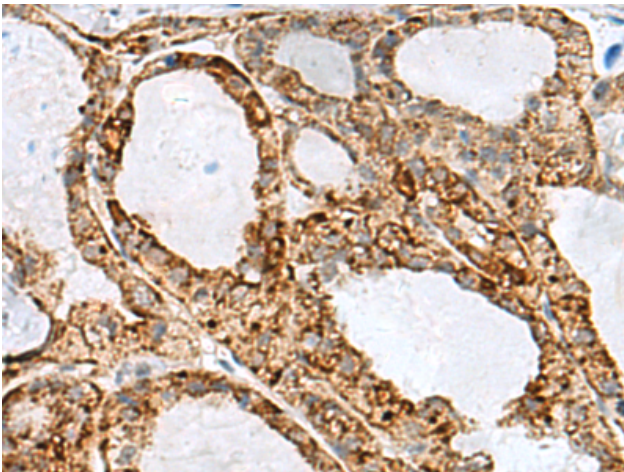
Storage & Shipping: Store at -20°C. Avoid repeated freezing and thawing



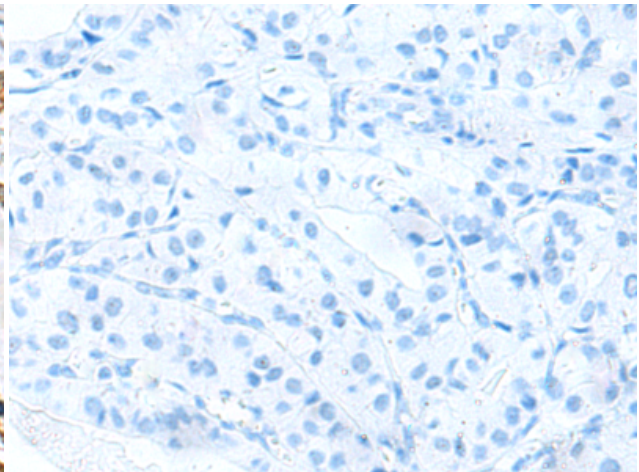
Immunohistochemistry analysis of paraffin embedded Human liver cancer tissue using 219201(MED31 Antibody) at a dilution of 1/100(Cytoplasm).



In comparison with the IHC on the left, the same paraffin-embedded Human liver cancer tissue is first treated with the fusion protein and then with 219201(Anti-MED31 Antibody) at dilution 1/100.



The image on the left is immunohistochemistry of paraffin-embedded Human thyroid cancer tissue using 219201(Anti-MED31 Antibody) at a dilution of 1/100.



In comparison with the IHC on the left, the same paraffin-embedded Human thyroid cancer tissue is first treated with fusion protein and then with D226040(Anti-MED31 Antibody) at dilution 1/100.