

MED16 RABBIT PAB

Cat.#: S211640

Product Name: Anti-MED16 Rabbit Polyclonal Antibody

Synonyms: DRIP92; THRAP5; TRAP95

UNIPROT ID: Q9Y2X0 (Gene Accession - BC004554)

Background: Enables thyroid hormone receptor binding activity and transcription coactivator activity. Involved in positive regulation of transcription initiation from RNA polymerase II promoter. Located in membrane. Part of mediator complex. [provided by Alliance of Genome Resources, Apr 2022]

Immunogen: Fusion protein of human MED16

Applications: ELISA, IHC

Recommended Dilutions: IHC: 100-300; ELISA: 5000-10000

Host Species: Rabbit

Clonality: Rabbit Polyclonal

Isotype: Immunogen-specific rabbit IgG

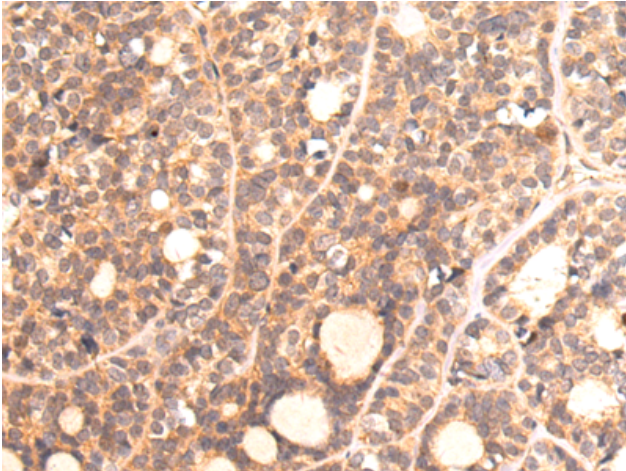
Purification: Antigen affinity purification

Species Reactivity: Human, Mouse

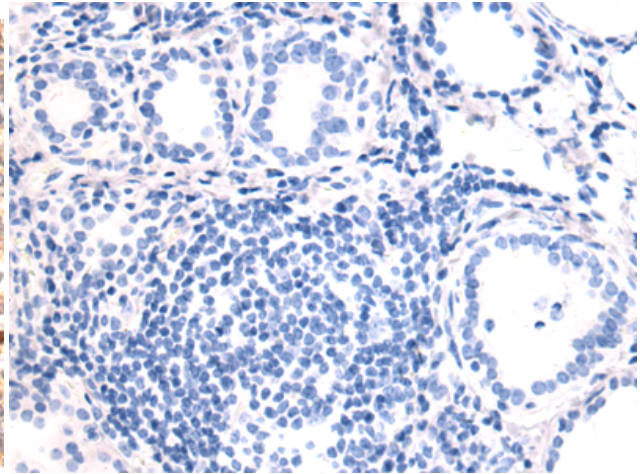
Constituents: PBS (without Mg²⁺ and Ca²⁺), pH 7.4, 150 mM NaCl, 0.05% Sodium Azide and 40% glycerol

Research Areas: Epigenetics and Nuclear Signaling

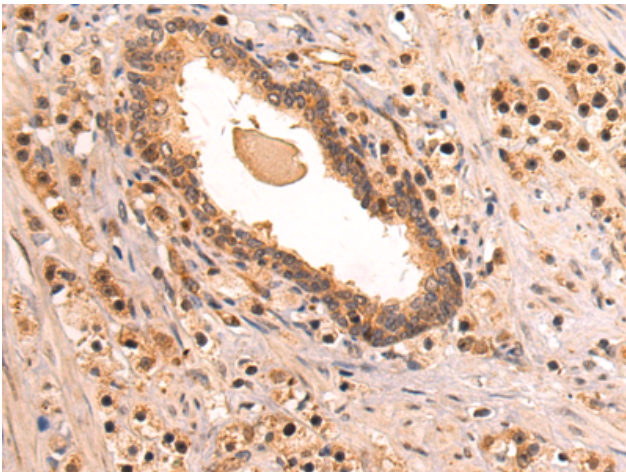
Storage & Shipping: Store at -20°C. Avoid repeated freezing and thawing



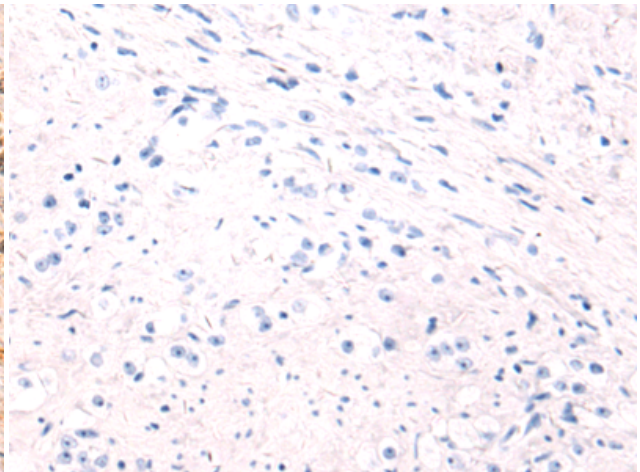
Immunohistochemistry analysis of paraffin-embedded Human thyroid cancer tissue using 211640 (MED16 Antibody) at a dilution of 1/125 (Cytoplasm or Nucleus).



In comparison with the IHC on the left, the same paraffin-embedded Human thyroid cancer tissue is first treated with the fusion protein and then with 211640 (Anti-MED16 Antibody) at dilution 1/125.



The image on the left is immunohistochemistry of paraffin-embedded Human prostate cancer tissue using 211640 (Anti-MED16 Antibody) at a dilution of 1/125.



In comparison with the IHC on the left, the same paraffin-embedded Human prostate cancer tissue is first treated with fusion protein and then with D123323 (Anti-MED16 Antibody) at dilution 1/125.