

## MECKELIN RABBIT MAB

**Cat.#:** N263420

**Product Name:** Anti-Meckelin Rabbit Monoclonal Antibody

**Synonyms:** MKS3; JBTS6; NPHP11; TNEM67; MECKELIN

**UNIPROT ID:** Q5HYA8

**Background:** Required for ciliary structure and function.

**Immunogen:** A synthetic peptide of human Meckelin

**Applications:** WB, ICC/IF

**Recommended Dilutions:** WB: 1/500-1/1000 IF: 1/50-1/200

**Host Species:** Rabbit

**Clonality:** Rabbit Monoclonal

**Clone ID:** R07-2A4

**MW:** Calculated MW: 112 kDa; Observed MW: 112 kDa

**Isotype:** IgG

**Purification:** Affinity Purified

**Species Reactivity:** Human

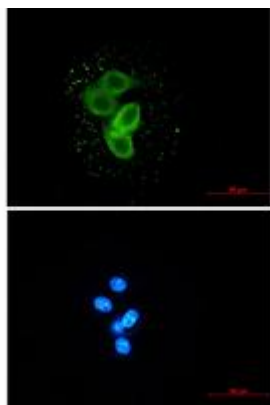
**Conjugation:** Unconjugated

**Modification:** Unmodified

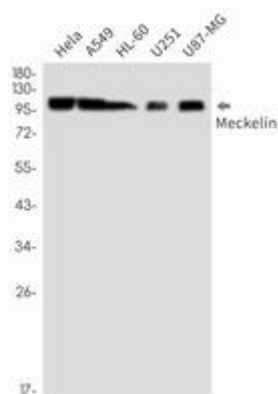
**Constituents:** PBS (without Mg<sup>2+</sup> and Ca<sup>2+</sup>), pH 7.3 containing 50% glycerol, 0.5% BSA and 0.02% sodium azide

**Research Areas:** Tags & Cell Markers

**Storage & Shipping:** Store at -20°C. Avoid repeated freezing and thawing



Immunocytochemistry analysis of Meckelin (green) in MCF-7 using Meckelin antibody, and DAPI (blue)



Western blot analysis of Meckelin in HeLa, A549, HL-60, U251, U87-MG lysates using Meckelin antibody.



# Product Description

Pioneering GTPase and Oncogene Product Development since 2010

---