

MCM7 RABBIT PAB

Cat.#: S216642

Product Name: Anti-MCM7 Rabbit Polyclonal Antibody

Synonyms: MCM2, CDC47, P85MCM, PICDC47, PNAS146, P1.1-MCM3

UNIPROT ID: P33993 (Gene Accession - BC013375)

Background: The protein encoded by this gene is one of the highly conserved mini-chromosome maintenance proteins (MCM) that are essential for the initiation of eukaryotic genome replication. The hexameric protein complex formed by the MCM proteins is a key component of the pre-replication complex (pre_RC) and may be involved in the formation of replication forks and in the recruitment of other DNA replication related proteins. The MCM complex consisting of this protein and MCM2, 4 and 6 proteins possesses DNA helicase activity, and may act as a DNA unwinding enzyme. Cyclin D1-dependent kinase, CDK4, is found to associate with this protein, and may regulate the binding of this protein with the tumorsuppressor protein RB1/RB. Alternatively spliced transcript variants encoding distinct isoforms have been reported.

Immunogen: Fusion protein of human MCM7

Applications: ELISA, WB, IHC

Recommended Dilutions: IHC: 15-50;WB: 500-2000;ELISA: 1000-5000

Host Species: Rabbit

Clonality: Rabbit Polyclonal

Isotype: Immunogen-specific rabbit IgG

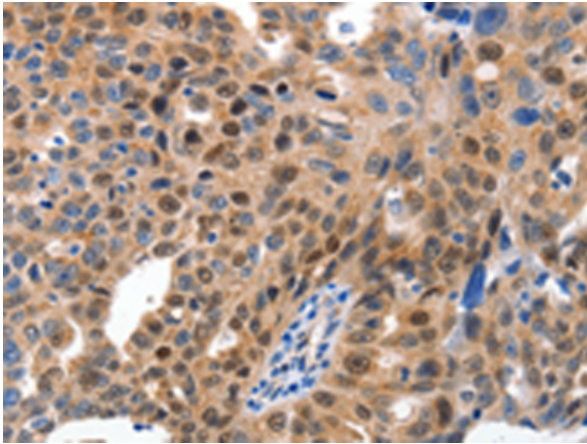
Purification: Antigen affinity purification

Species Reactivity: Human, Mouse

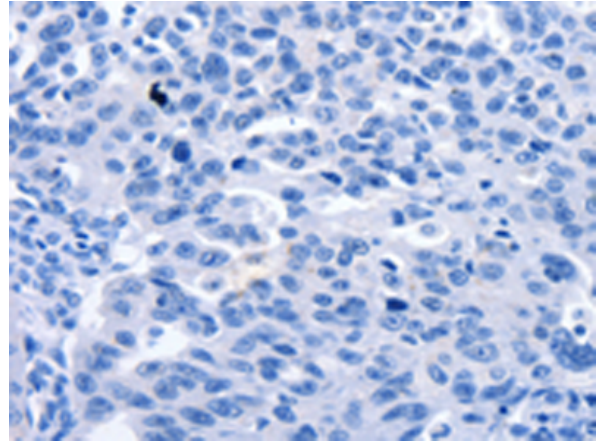
Constituents: PBS (without Mg²⁺ and Ca²⁺), pH 7.4, 150 mM NaCl, 0.05% Sodium Azide and 40% glycerol

Research Areas: Epigenetics and Nuclear Signaling

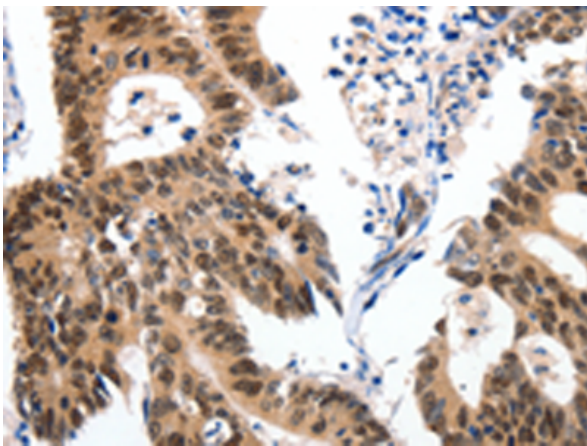
Storage & Shipping: Store at -20°C. Avoid repeated freezing and thawing



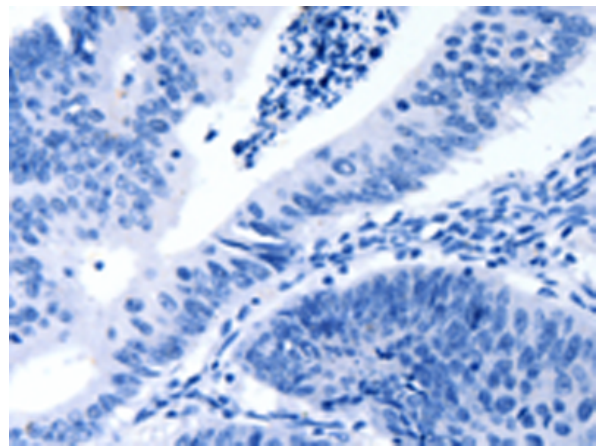
Immunohistochemistry analysis of paraffin embedded Human ovarian cancer tissue using 216642(MCM7 Antibody) at a dilution of 1/15(Cytoplasm, Nucleus).



In comparison with the IHC on the left, the same paraffin-embedded Human ovarian cancer tissue is first treated with the fusion protein and then with 216642(Anti-MCM7 Antibody) at dilution 1/15.



The image on the left is immunohistochemistry of paraffin-embedded Human colon cancer tissue using 216642(Anti-MCM7 Antibody) at a dilution of 1/15.



In comparison with the IHC on the left, the same paraffin-embedded Human colon cancer tissue is first treated with fusion protein and then with D220965(Anti-MCM7 Antibody) at dilution 1/15.



Gel: 10%SDS-PAGE, Lysate: 50 µg;
Lane: Jurkat cells;
Primary antibody: 216642(MCM7 Antibody) at dilution 1/300;
Secondary antibody: Goat anti rabbit IgG at 1/8000 dilution;
Exposure time: 30 seconds



Product Description

Pioneering GTPase and Oncogene Product Development since 2010
