

MCM6 RABBIT MAB

Cat.#: N261547

Product Name: Anti-MCM6 Rabbit Monoclonal Antibody

Synonyms: minichromosome maintenance complex component 6; Mis5; P105MCM; MCG40308

UNIPROT ID: Q14566

Background: Acts as component of the MCM2-7 complex (MCM complex) which is the putative replicative helicase essential for 'once per cell cycle' DNA replication initiation and elongation in eukaryotic cells.

Immunogen: Recombinant protein of human MCM6

Applications: WB,IHC-F,IHC-P,ICC/IF,IP

Recommended Dilutions: WB: 1/500-1/1000 IHC: 1/50-1/100 IF: 1/50-1/200 IP: 1/20

Host Species: Rabbit

Clonality: Rabbit Monoclonal

Clone ID: R02-212

MW: Calculated MW: 93 kDa; Observed MW: 93 kDa

Isotype: IgG

Purification: Affinity Purified

Species Reactivity: Human

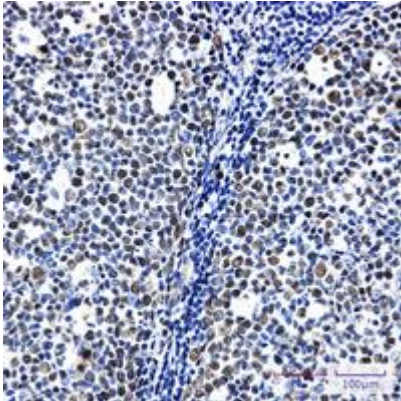
Conjugation: Unconjugated

Modification: Unmodified

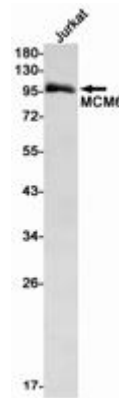
Constituents: PBS (without Mg²⁺ and Ca²⁺), pH 7.3 containing 50% glycerol, 0.5% BSA and 0.02% sodium azide

Research Areas: Epigenetics and Nuclear Signaling

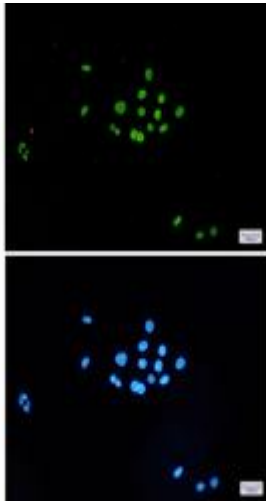
Storage & Shipping: Store at -20°C. Avoid repeated freezing and thawing



Immunohistochemistry analysis of paraffin-embedded Human tonsil using MCM6 antibody. High-pressure and temperature Sodium Citrate pH 6.0 was used for antigen retrieval.



Western blot analysis of MCM6 in Jurkat lysates using MCM6 antibody.



Immunocytochemistry analysis of MCM6 (green) in HeLa using MCM6 antibody, and DAPI (blue)