

## MCM5 RABBIT PAB

**Cat.#:** N225921

**Product Name:** Anti-MCM5 Rabbit pAb

**Synonyms:** CDC46; MCM5; MGC5315; P1 CDC46

**UNIPROT ID:** P33992

**Background:** MCM5 Belongs to the MCM family.

**Immunogen:** A synthesized peptide derived from human MCM5

**Applications:** WB,IHC-P,ICC/IF,IP,FC

**Recommended Dilutions:** WB: 1/500-1/1000 IHC: 1/50-1/100 IF: 1/50-1/200 IP: 1/20 FC: 1/50-1/100

**Host Species:** Rabbit

**Clonality:** Rabbit Polyclonal

**Clone ID:** -

**MW:** Calculated MW: 82 kDa; Observed MW: 82 kDa

**Isotype:** IgG

**Purification:** Affinity Chromatography

**Species Reactivity:** Human,Mouse

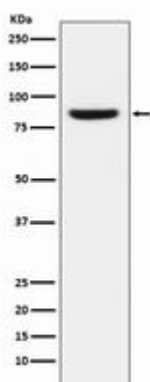
**Conjugation:** Unconjugated

**Modification:** Unmodified

**Constituents:** PBS (without Mg<sup>2+</sup> and Ca<sup>2+</sup>), pH 7.3 containing 50% glycerol, 0.5% BSA and 0.02% sodium azide

**Research Areas:** Epigenetics and Nuclear Signaling

**Storage & Shipping:** Store at -20°C. Avoid repeated freezing and thawing



Western blot analysis of MCM5 in MCF-7 lysates using MCM5 antibody.