

MCM3 RABBIT MAB

Cat.#: N261546

Product Name: Anti-MCM3 Rabbit Monoclonal Antibody

Synonyms: MCM3; HCC5; P1-MCM3; P1.h; RLFB

UNIPROT ID: P25205

Background: Acts as component of the MCM2-7 complex (MCM complex) which is the putative replicative helicase essential for 'once per cell cycle' DNA replication initiation and elongation in eukaryotic cells.

Immunogen: A synthetic peptide of human MCM3

Applications: WB,IHC-F,IHC-P,ICC/IF

Recommended Dilutions: WB: 1/500-1/1000 IHC: 1/50-1/100 IF: 1/50-1/200

Host Species: Rabbit

Clonality: Rabbit Monoclonal

Clone ID: R04-6B9

MW: Calculated MW: 91 kDa; Observed MW: 100 kDa

Isotype: IgG

Purification: Affinity Purified

Species Reactivity: Human,Rat

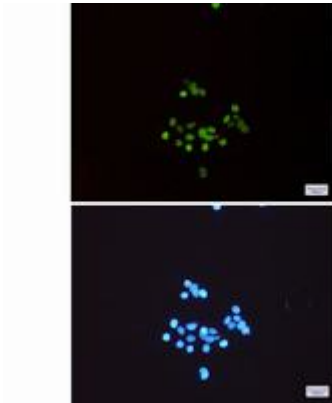
Conjugation: Unconjugated

Modification: Unmodified

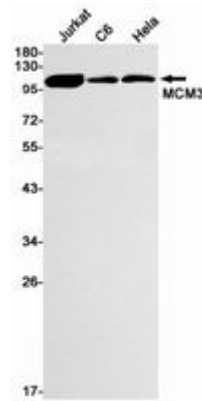
Constituents: PBS (without Mg²⁺ and Ca²⁺), pH 7.3 containing 50% glycerol, 0.5% BSA and 0.02% sodium azide

Research Areas: Epigenetics and Nuclear Signaling

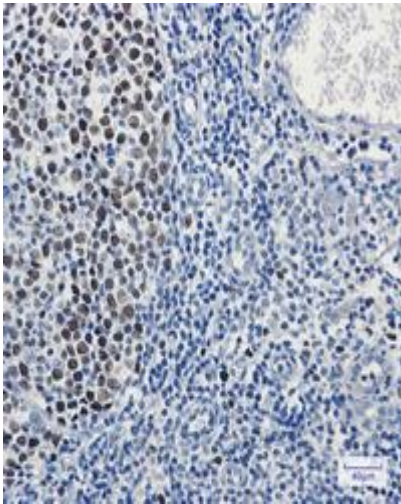
Storage & Shipping: Store at -20°C. Avoid repeated freezing and thawing



Immunocytochemistry analysis of MCM3 (green) in HeLa using MCM3 antibody, and DAPI (blue)



Western blot analysis of MCM3 in Jurkat, C6, HeLa lysates using MCM3 antibody.



Immunohistochemistry analysis of paraffin-embedded Human tonsil using MCM3 antibody. High-pressure and temperature Sodium Citrate pH 6.0 was used for antigen retrieval.