

## MCM2 (2B5) MOUSE MAB

**Cat.#:** N261200

**Product Name:** Anti-MCM2 (2B5) Mouse Monoclonal Antibody

**Synonyms:** MCM2; BM28; CCN1; CDCL1; KIAA0030; DNA replication licensing factor MCM2; Minichromosome maintenance protein 2 homolog; Nuclear protein BM28

**UNIPROT ID:** P49736

**Background:** The protein encoded by this gene is one of the highly conserved mini-chromosome maintenance proteins (MCM) that are involved in the initiation of eukaryotic genome replication. The hexameric protein complex formed by MCM proteins is a key component of the pre-replication complex (pre\_RC) and may be involved in the formation of replication forks and in the recruitment of other DNA replication related proteins. This protein forms a complex with MCM4, 6, and 7, and has been shown to regulate the helicase activity of the complex. This protein is phosphorylated, and thus regulated by, protein kinases CDC2 and CDC7. Multiple alternatively spliced transcript variants have been found, but the full-length nature of some variants has not been defined. [provided by RefSeq, Oct 2012]

**Immunogen:** Purified recombinant fragment of human MCM2 expressed in E. Coli.

**Applications:** WB,IHC-F,IHC-P,ICC/IF,FC,IP

**Recommended Dilutions:** WB: 1/500-1/1000 IHC: 1/50-1/100 IF: 1/50-1/200 IP: 1/20 FC: 1/50-1/100

**Host Species:** Mouse

**Clonality:** Mouse Monoclonal

**Clone ID:** 2B5-H4-A9

**MW:** Calculated MW: 102 kDa; Observed MW: 125 kDa

**Isotype:** IgG1

**Purification:** Ascitic Fluid

**Species Reactivity:** Human,Mouse

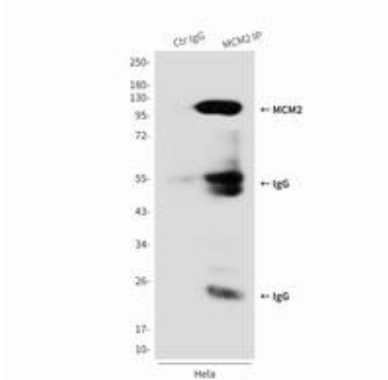
**Conjugation:** Unconjugated

**Modification:** Unmodified

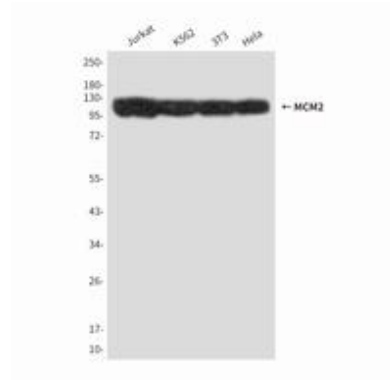
**Constituents:** PBS (without Mg<sup>2+</sup> and Ca<sup>2+</sup>), pH 7.3 containing 50% glycerol, 0.5% BSA and 0.02% sodium azide

**Research Areas:** Epigenetics and Nuclear Signaling

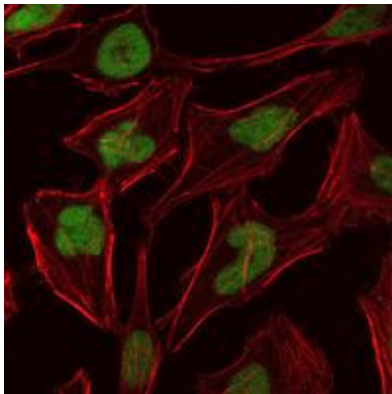
**Storage & Shipping:** Store at -20°C. Avoid repeated freezing and thawing



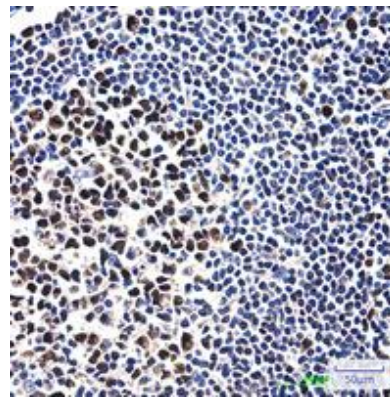
Immunoprecipitation analysis of MCM2 (2B5) in HeLa lysates using MCM2 antibody.



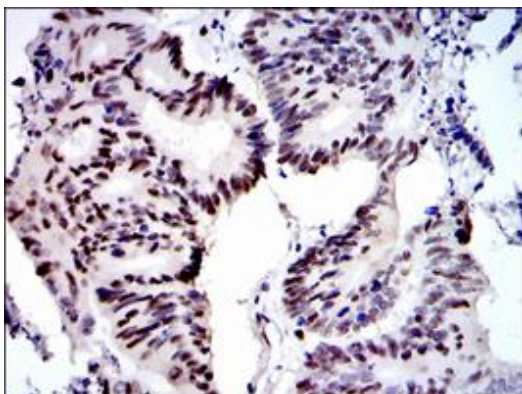
Western blot analysis of MCM2 in Jurkat, K562, 3T3 and HeLa lysates using MCM2 antibody.



Immunofluorescence analysis of MCM2 (2B5) in HeLa cells using MCM2 antibody (green), and DAPI (blue).



Immunohistochemistry analysis of paraffin-embedded Human tonsil tissue using MCM2 (2B5) antibody. High-pressure and temperature Sodium Citrate pH 6.0 was used for antigen retrieval.



Immunohistochemistry analysis of paraffin-embedded colon cancer tissues using MCM2 antibody. High-pressure and temperature Sodium Citrate pH 6.0 was used for antigen retrieval.



# Product Description

Pioneering GTPase and Oncogene Product Development since 2010

---