

MCHR2 RABBIT PAB

Cat.#: S215895

Product Name: Anti-MCHR2 Rabbit Polyclonal Antibody

Synonyms: SLT; MCH2; MCH2R; GPR145; GPRv17; MCH-2R; MCH-R2; MCHR-2

UNIPROT ID: Q969V1 (Gene Accession - NP_115892)

Background: Receptor for melanin-concentrating hormone, coupled to G proteins that activate phosphoinositide hydrolysis.

Immunogen: Synthetic peptide of human MCHR2

Applications: ELISA, IHC

Recommended Dilutions: IHC: 20-100; ELISA: 5000-10000

Host Species: Rabbit

Clonality: Rabbit Polyclonal

Isotype: Immunogen-specific rabbit IgG

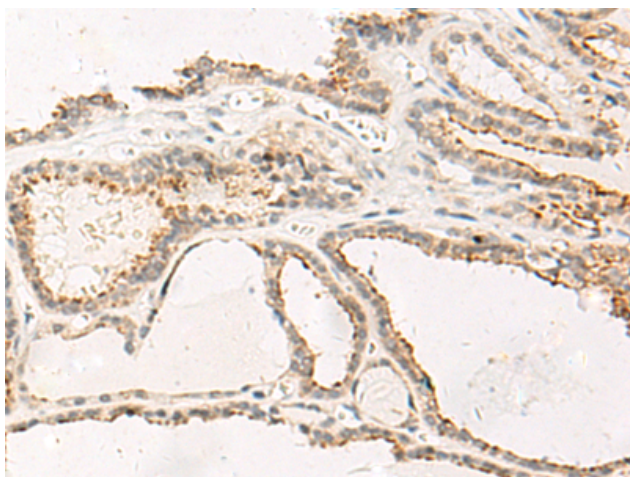
Purification: Antigen affinity purification

Species Reactivity: Human

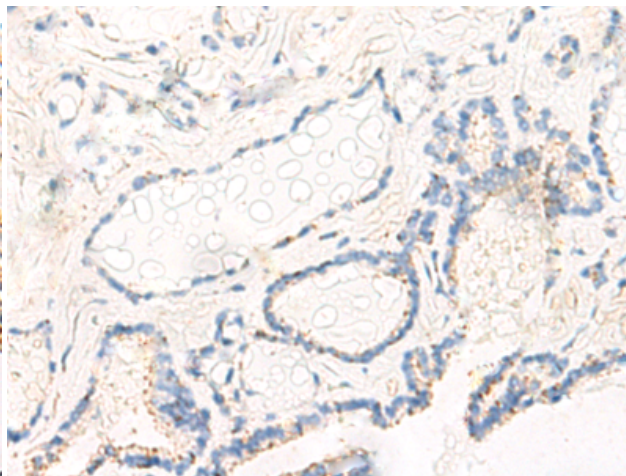
Constituents: PBS (without Mg²⁺ and Ca²⁺), pH 7.4, 150 mM NaCl, 0.05% Sodium Azide and 40% glycerol

Research Areas: Signal Transduction, Neuroscience

Storage & Shipping: Store at -20°C. Avoid repeated freezing and thawing



Immunohistochemistry analysis of paraffin embedded Human thyroid cancer tissue using 215895(MCHR2 Antibody) at a dilution of 1/20(Cell membrane).



In comparison with the IHC on the left, the same paraffin-embedded Human thyroid cancer tissue is first treated with the synthetic peptide and then with 215895(Anti-MCHR2 Antibody) at dilution 1/20.