

MCCC1 RABBIT PAB

Cat.#: S212609

Product Name: Anti-MCCC1 Rabbit Polyclonal Antibody

Synonyms: MCCA; MCC-B

UNIPROT ID: Q96RQ3 (Gene Accession - BC004187)

Background: This gene encodes the large subunit of 3-methylcrotonyl-CoA carboxylase. This enzyme functions as a heterodimer and catalyzes the carboxylation of 3-methylcrotonyl-CoA to form 3-methylglutaconyl-CoA. Mutations in this gene are associated with 3-Methylcrotonylglycinuria, an autosomal recessive disorder of leucine catabolism.

Immunogen: Fusion protein of human MCCC1

Applications: ELISA, WB, IHC

Recommended Dilutions: IHC: 40-200;WB: 500-2000;ELISA: 5000-10000

Host Species: Rabbit

Clonality: Rabbit Polyclonal

Isotype: Immunogen-specific rabbit IgG

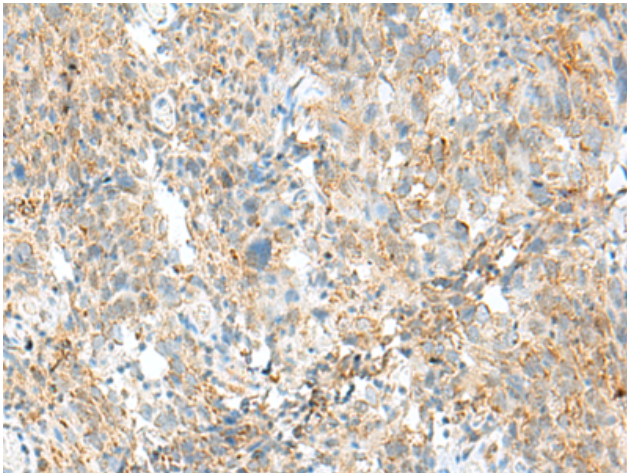
Purification: Antigen affinity purification

Species Reactivity: Human, Mouse

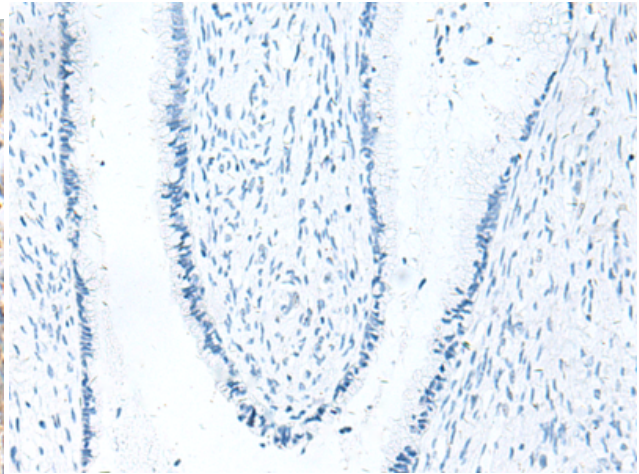
Constituents: PBS (without Mg²⁺ and Ca²⁺), pH 7.4, 150 mM NaCl, 0.05% Sodium Azide and 40% glycerol

Research Areas: Metabolism

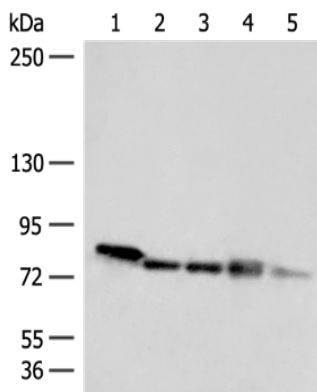
Storage & Shipping: Store at -20°C. Avoid repeated freezing and thawing



Immunohistochemistry analysis of paraffin embedded Human cervical cancer tissue using 212609(MCCC1 Antibody) at a dilution of 1/45(Cytoplasm).



In comparison with the IHC on the left, the same paraffin-embedded Human cervical cancer tissue is first treated with the fusion protein and then with 212609(Anti-MCCC1 Antibody) at dilution 1/45.



Gel: 6%SDS-PAGE, Lysate: 40 μ g;
Lane 1-5: 293T, HepG2, A172 cell, Mouse heart tissue, Jurkat cell lysates;
Primary antibody: 212609(MCCC1 Antibody) at dilution 1/300;
Secondary antibody: Goat anti rabbit IgG at 1/8000 dilution;
Exposure time: 5 seconds