

MBD2 RABBIT PAB

Cat.#: N225923

Product Name: Anti-MBD2 Rabbit pAb

Synonyms: Demethylase; DMTase; Mbd2; MBD2a

UNIPROT ID: Q9UBB5

Background: Binds CpG islands in promoters where the DNA is methylated at position 5 of cytosine within CpG dinucleotides. Binds hemimethylated DNA as well. Recruits histone deacetylases and DNA methyltransferases.

Immunogen: A synthesized peptide derived from human MBD2

Applications: WB,IHC-P,ICC/IF,IP,FC

Recommended Dilutions: WB: 1/500-1/1000 IHC: 1/50-1/100 IF: 1/50-1/200 IP: 1/20 FC: 1/50-1/100

Host Species: Rabbit

Clonality: Rabbit Polyclonal

Clone ID: -

MW: Calculated MW: 43 kDa; Observed MW: 29,43 kDa

Isotype: IgG

Purification: Affinity Chromatography

Species Reactivity: Human,Mouse,Rat

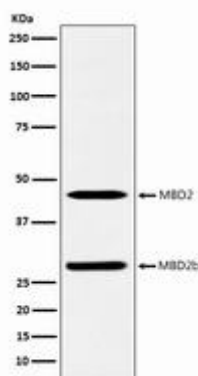
Conjugation: Unconjugated

Modification: Unmodified

Constituents: PBS (without Mg²⁺ and Ca²⁺), pH 7.3 containing 50% glycerol, 0.5% BSA and 0.02% sodium azide

Research Areas: Epigenetics and Nuclear Signaling

Storage & Shipping: Store at -20°C. Avoid repeated freezing and thawing



Western blot analysis of MBD2 in A375 lysates using MBD2 antibody.



Product Description

Pioneering GTPase and Oncogene Product Development since 2010
