

## MAVS RABBIT PAB

**Cat.#:** S220699

**Product Name:** Anti-MAVS Rabbit Polyclonal Antibody

**Synonyms:** IPS1; VISA; IPS-1; CARDIF

**UNIPROT ID:** Q7Z434 (Gene Accession - NP\_065797 )

**Background:** This gene encodes an intermediary protein necessary in the virus-triggered beta interferon signaling pathways. It is required for activation of transcription factors which regulate expression of beta interferon and contributes to antiviral immunity. Multiple transcript variants encoding different isoforms have been found for this gene

**Immunogen:** Synthetic peptide of human MAVS

**Applications:** ELISA, WB, IHC

**Recommended Dilutions:** IHC: 50-200;WB: 500-2000;ELISA: 2000-5000

**Host Species:** Rabbit

**Clonality:** Rabbit Polyclonal

**Isotype:** Immunogen-specific rabbit IgG

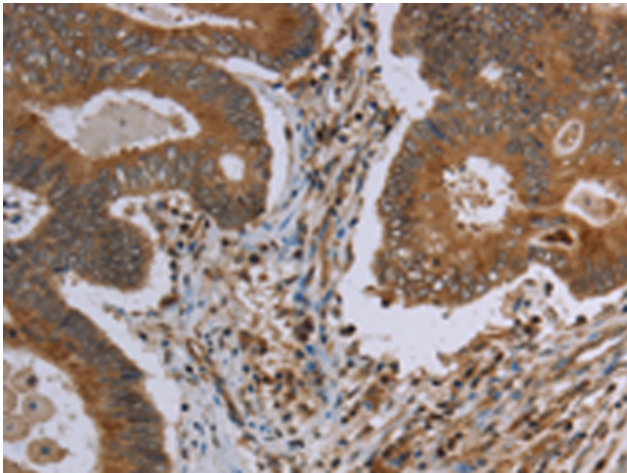
**Purification:** Antigen affinity purification

**Species Reactivity:** Human, Mouse

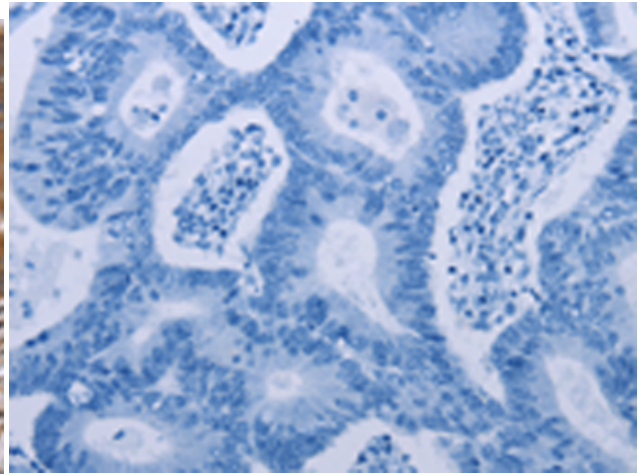
**Constituents:** PBS (without Mg<sup>2+</sup> and Ca<sup>2+</sup>), pH 7.4, 150 mM NaCl, 0.05% Sodium Azide and 40% glycerol

**Research Areas:** Signal Transduction, Epigenetics and Nuclear Signaling, Immunology

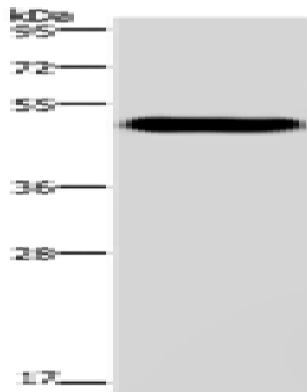
**Storage & Shipping:** Store at -20°C. Avoid repeated freezing and thawing



Immunohistochemistry analysis of paraffin embedded Human colon cancer tissue using 220699(MAVS Antibody) at a dilution of 1/30(Cytoplasm).



In comparison with the IHC on the left, the same paraffin-embedded Human colon cancer tissue is first treated with the synthetic peptide and then with 220699(Anti-MAVS Antibody) at dilution 1/30.



Gel: 8%SDS-PAGE, Lysate: 40  $\mu$ g;  
Lane: Mouse heart tissue;  
Primary antibody: 220699(MAVS Antibody) at dilution 1/250;  
Secondary antibody: Goat anti rabbit IgG at 1/8000 dilution;  
Exposure time: 1 minute