

MAS1L RABBIT MAB

Cat.#: N262490

Product Name: Anti-MAS1L Rabbit Monoclonal Antibody

Synonyms: MRG; MAS-L; dJ994E9.2

UNIPROT ID: P35410

Background: Predicted to enable G protein-coupled receptor activity. Predicted to be involved in G protein-coupled receptor signaling pathway. Located in cytosol; nucleoplasm; and plasma membrane.

Immunogen: A synthetic peptide of human MAS1L

Applications: WB,IP

Recommended Dilutions: WB: 1/500-1/1000 IP: 1/20

Host Species: Rabbit

Clonality: Rabbit Monoclonal

Clone ID: R06-4D9

MW: Calculated MW: 42 kDa; Observed MW: 42 kDa

Isotype: IgG

Purification: Affinity Purified

Species Reactivity: Human,Mouse,Rat

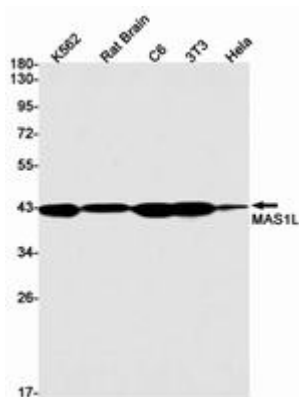
Conjugation: Unconjugated

Modification: Unmodified

Constituents: PBS (without Mg²⁺ and Ca²⁺), pH 7.3 containing 50% glycerol, 0.5% BSA and 0.02% sodium azide

Research Areas: Neuroscience

Storage & Shipping: Store at -20°C. Avoid repeated freezing and thawing



Western blot analysis of MAS1L in K562, rat Brain, C6, 3T3, HeLa lysates using MAS1L antibody.



Product Description

Pioneering GTPase and Oncogene Product Development since 2010
