

MARK2 RABBIT PAB

Cat.#: S213838

Product Name: Anti-MARK2 Rabbit Polyclonal Antibody

Synonyms: EMK1; EMK-1; PAR-1; Par1b; Par-1b

UNIPROT ID: Q7KZ17 (Gene Accession - NP_001034558)

Background: This gene encodes a member of the Par-1 family of serine/threonine protein kinases. The protein is an important regulator of cell polarity in epithelial and neuronal cells, and also controls the stability of microtubules through phosphorylation and inactivation of several microtubule-associating proteins. The protein localizes to cell membranes. Multiple transcript variants encoding different isoforms have been found for this gene.

Immunogen: Synthetic peptide of human MARK2

Applications: ELISA, IHC

Recommended Dilutions: IHC: 25-100; ELISA: 2000-5000

Host Species: Rabbit

Clonality: Rabbit Polyclonal

Isotype: Immunogen-specific rabbit IgG

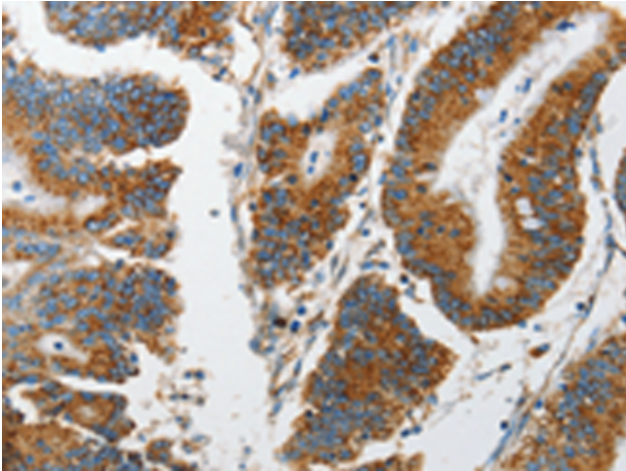
Purification: Antigen affinity purification

Species Reactivity: Human, Mouse, Rat

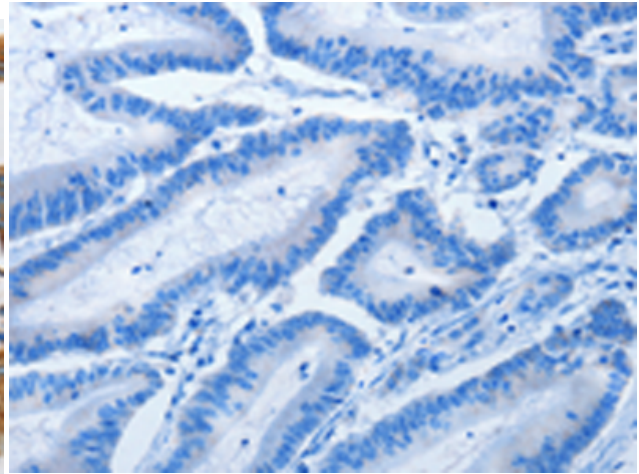
Constituents: PBS (without Mg²⁺ and Ca²⁺), pH 7.4, 150 mM NaCl, 0.05% Sodium Azide and 40% glycerol

Research Areas: Signal Transduction

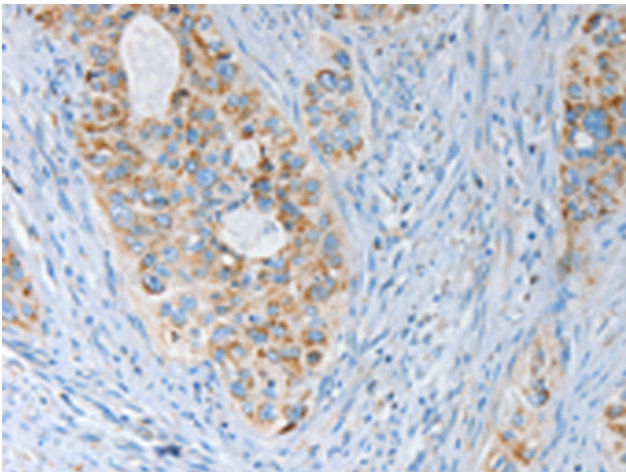
Storage & Shipping: Store at -20°C. Avoid repeated freezing and thawing



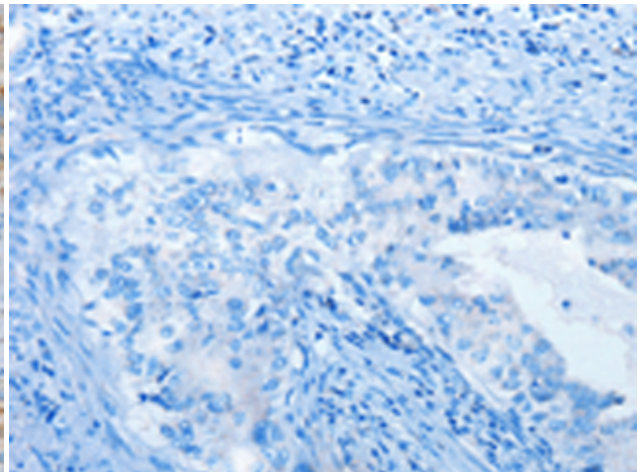
Immunohistochemistry analysis of paraffin embedded Human colon cancer tissue using 213838(MARK2 Antibody) at a dilution of 1/15(Cytoplasm).



In comparison with the IHC on the left, the same paraffin-embedded Human colon cancer tissue is first treated with the synthetic peptide and then with 213838(Anti-MARK2 Antibody) at dilution 1/15.



The image on the left is immunohistochemistry of paraffin-embedded Human cervical cancer tissue using 213838(Anti-MARK2 Antibody) at a dilution of 1/15.



In comparison with the IHC on the left, the same paraffin-embedded Human cervical cancer tissue is first treated with synthetic peptide and then with D160930(Anti-MARK2 Antibody) at dilution 1/15.