

## MAPK8IP3 RABBIT PAB

**Cat.#:** S216030

**Product Name:** Anti-MAPK8IP3 Rabbit Polyclonal Antibody

**Synonyms:** syd; JIP3; SYD2; JIP-3; JSAP1

**UNIPROT ID:** Q9UPT6 (Gene Accession - NP\_055948 )

**Background:** The protein encoded by this gene shares similarity with the product of *Drosophila* *syd* gene, required for the functional interaction of kinesin I with axonal cargo. Studies of the similar gene in mouse suggested that this protein may interact with, and regulate the activity of numerous protein kinases of the JNK signaling pathway, and thus function as a scaffold protein in neuronal cells. The *C. elegans* counterpart of this gene is found to regulate synaptic vesicle transport possibly by integrating JNK signaling and kinesin-1 transport. Several alternatively spliced transcript variants of this gene have been described, but the full-length nature of some of these variants has not been determined.

**Immunogen:** Synthetic peptide of human MAPK8IP3

**Applications:** ELISA, IHC

**Recommended Dilutions:** IHC: 40-200; ELISA: 5000-10000

**Host Species:** Rabbit

**Clonality:** Rabbit Polyclonal

**Isotype:** Immunogen-specific rabbit IgG

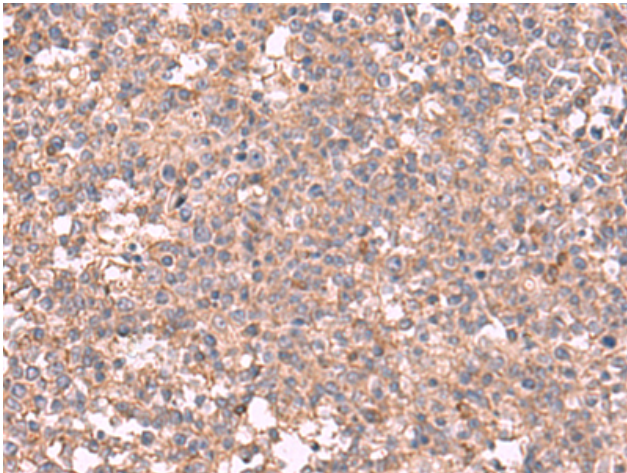
**Purification:** Antigen affinity purification

**Species Reactivity:** Human

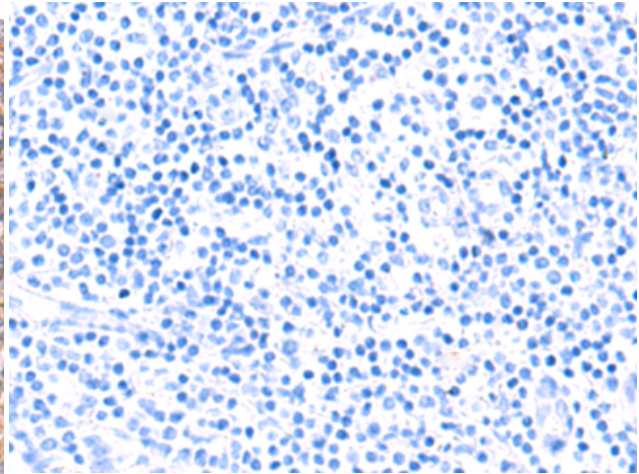
**Constituents:** PBS (without Mg<sup>2+</sup> and Ca<sup>2+</sup>), pH 7.4, 150 mM NaCl, 0.05% Sodium Azide and 40% glycerol

**Research Areas:** Signal Transduction

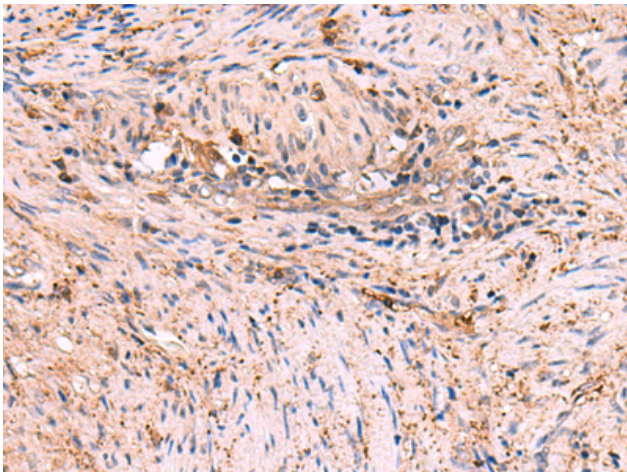
**Storage & Shipping:** Store at -20°C. Avoid repeated freezing and thawing



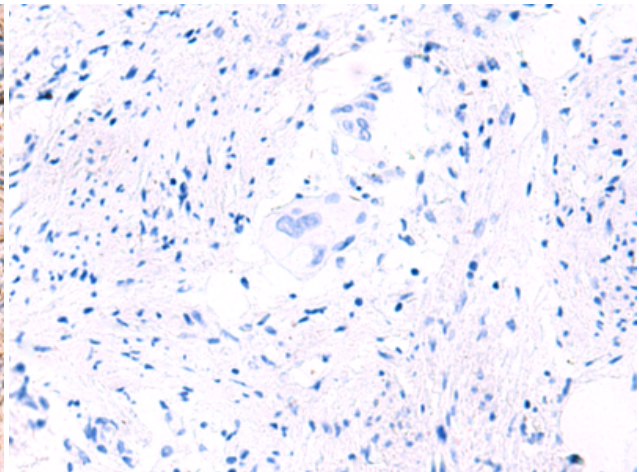
Immunohistochemistry analysis of paraffin embedded Human tonsil tissue using 216030 (MAPK8IP3 Antibody) at a dilution of 1/45 (Cytoplasm).



In comparison with the IHC on the left, the same paraffin-embedded Human tonsil tissue is first treated with the synthetic peptide and then with 216030 (Anti-MAPK8IP3 Antibody) at dilution 1/45.



The image on the left is immunohistochemistry of paraffin-embedded Human cervical cancer tissue using 216030 (Anti-MAPK8IP3 Antibody) at a dilution of 1/45.



In comparison with the IHC on the left, the same paraffin-embedded Human cervical cancer tissue is first treated with synthetic peptide and then with D164293 (Anti-MAPK8IP3 Antibody) at dilution 1/45.