

MAP4K2/3 RABBIT PAB

Cat.#: N225234

Product Name: Anti-MAP4K2/3 Rabbit pAb

Synonyms: Mitogen-activated protein kinase kinase kinase 2; B lymphocyte serine/threonine-protein kinase; Germinal center kinase; GC kinase; MAPK/ERK kinase kinase 2; MEK kinase kinase 2; MEKKK 2; Rab8-interacting protein; Mitogen-activated protein kinase kinase kinase 3; Germinal center kinase-related protein kinase; GLK; MAPK/ERK kinase kinase kinase 3; MEK kinase kinase 3; MEKKK 3

UNIPROT ID: Q12851/Q8IVH8

Background: Serine/threonine-protein kinase which acts as an essential component of the MAP kinase signal transduction pathway. Acts as a MAPK kinase kinase (MAP4K) and is an upstream activator of the stress-activated protein kinase/c-Jun N-terminal kinase (SAP/JNK) signaling pathway and to a lesser extent of the p38 MAPKs signaling pathway.

Immunogen: Synthesized peptide derived from human GCK/GLK. at AA range: 221-270

Applications: WB,ELISA

Recommended Dilutions: WB: 1/500-1/1000 ELISA: 1/10000

Host Species: Rabbit

Clonality: Rabbit Polyclonal

Clone ID: -

MW: Calculated MW: 92 kDa; Observed MW: 100 kDa

Isotype: IgG

Purification: Affinity Purified

Species Reactivity: Human,Rat

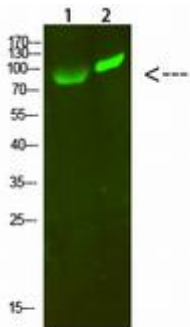
Conjugation: Unconjugated

Modification: Unmodified

Constituents: PBS (without Mg²⁺ and Ca²⁺), pH 7.3 containing 50% glycerol, 0.5% BSA and 0.02% sodium azide

Research Areas: Signal Transduction

Storage & Shipping: Store at -20°C. Avoid repeated freezing and thawing



Western blot analysis of MAP4K2/3 in 293T, HeLa lysates using MAP4K2/3 antibody.