

MAP3K4 RABBIT MAB

Cat.#: N263414

Product Name: Anti-MAP3K4 Rabbit Monoclonal Antibody

Synonyms: MTK1; MEKK4; MEKK 4; MAPKKK4; PRO0412

UNIPROT ID: Q9Y6R4

Background: Component of a protein kinase signal transduction cascade.

Immunogen: A synthetic peptide of human MAP3K4

Applications: WB,IHC-F,IHC-P,ICC/IF

Recommended Dilutions: WB: 1/500-1/1000 IHC: 1/50-1/100 IF: 1/50-1/200

Host Species: Rabbit

Clonality: Rabbit Monoclonal

Clone ID: R05-8A5

MW: Calculated MW: 182 kDa; Observed MW: 200 kDa

Isotype: IgG

Purification: Affinity Purified

Species Reactivity: Human

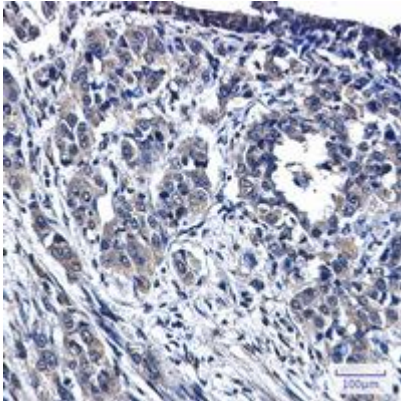
Conjugation: Unconjugated

Modification: Unmodified

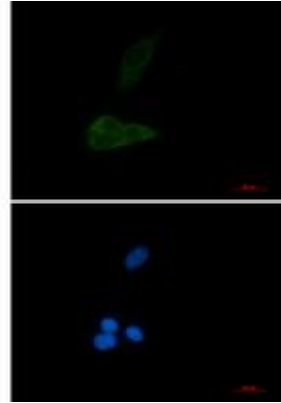
Constituents: PBS (without Mg²⁺ and Ca²⁺), pH 7.3 containing 50% glycerol, 0.5% BSA and 0.02% sodium azide

Research Areas: Signal Transduction

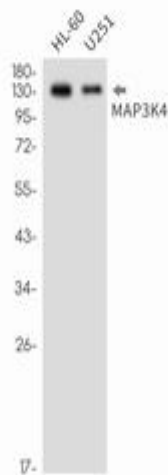
Storage & Shipping: Store at -20°C. Avoid repeated freezing and thawing



Immunohistochemistry analysis of paraffin-embedded Human lung cancer tissue using MAP3K4 antibody. High-pressure and temperature Sodium Citrate pH 6.0 was used for antigen retrieval.



Immunocytochemistry analysis of MAP3K4 (green) in Hela cells using MAP3K4 antibody and DAPI (blue).



Western blot analysis of MAP3K4 in HL-60, U251 lysates using MAP3K4 antibody.