

MAP3K13 RABBIT PAB

Cat.#: S217124

Product Name: Anti-MAP3K13 Rabbit Polyclonal Antibody

Synonyms: LZK; MLK; MEKK13

UNIPROT ID: O43283 (Gene Accession - BC111726)

Background: The protein encoded by this gene is a member of serine/threonine protein kinase family. This kinase contains a dual leucine-zipper motif, and has been shown to form dimers/oligomers through its leucine-zipper motif. This kinase can phosphorylate and activate MAPK8/JNK, MAP2K7/MKK7, which suggests a role in the JNK signaling pathway.

Immunogen: Fusion protein of human MAP3K13

Applications: ELISA, IHC

Recommended Dilutions: IHC: 50-200; ELISA: 1000-5000

Host Species: Rabbit

Clonality: Rabbit Polyclonal

Isotype: Immunogen-specific rabbit IgG

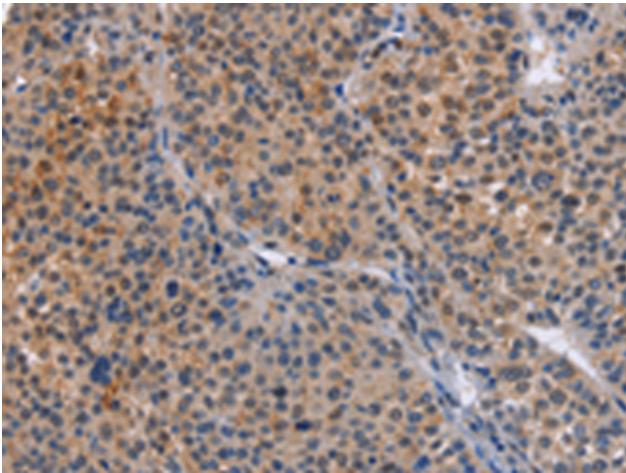
Purification: Antigen affinity purification

Species Reactivity: Human, Mouse

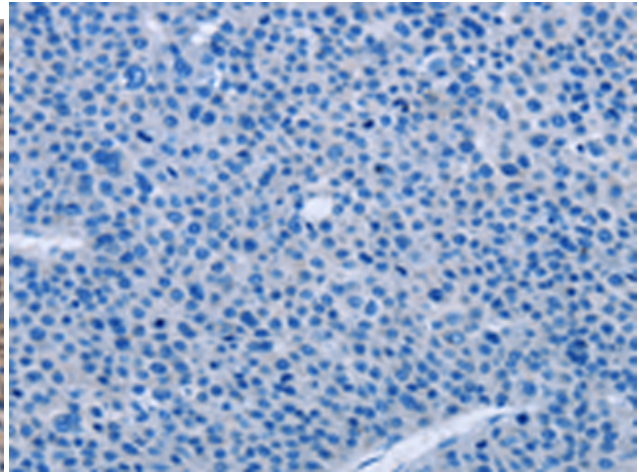
Constituents: PBS (without Mg²⁺ and Ca²⁺), pH 7.4, 150 mM NaCl, 0.05% Sodium Azide and 40% glycerol

Research Areas: Signal Transduction

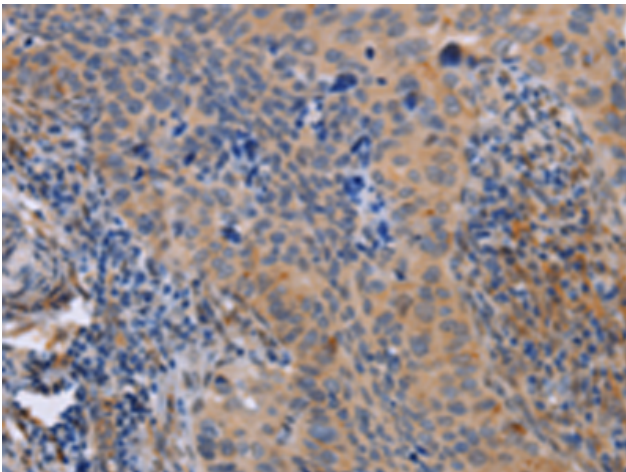
Storage & Shipping: Store at -20°C. Avoid repeated freezing and thawing



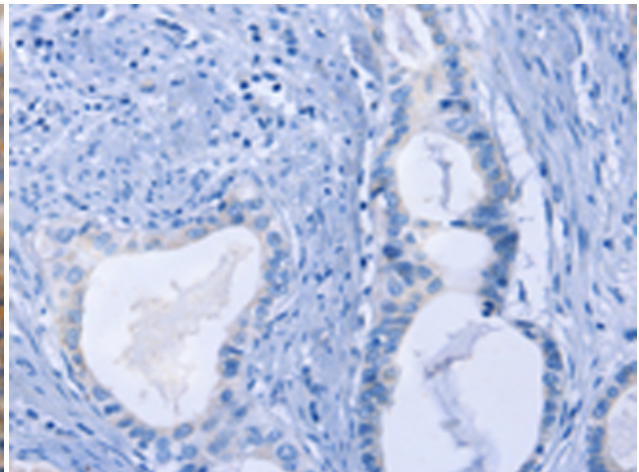
Immunohistochemistry analysis of paraffin embedded Human liver cancer tissue using 217124 (MAP3K13 Antibody) at a dilution of 1/40 (Cytoplasm).



In comparison with the IHC on the left, the same paraffin-embedded Human liver cancer tissue is first treated with the fusion protein and then with 217124 (Anti-MAP3K13 Antibody) at dilution 1/40.



The image on the left is immunohistochemistry of paraffin-embedded Human cervical cancer tissue using 217124 (Anti-MAP3K13 Antibody) at a dilution of 1/40.



In comparison with the IHC on the left, the same paraffin-embedded Human cervical cancer tissue is first treated with fusion protein and then with D221833 (Anti-MAP3K13 Antibody) at dilution 1/40.