

## MAP3K12 RABBIT PAB

**Cat.#:** S216824

**Product Name:** Anti-MAP3K12 Rabbit Polyclonal Antibody

**Synonyms:** DLK; MUK; ZPK; ZPKP1; MEKK12

**UNIPROT ID:** Q12852 (Gene Accession - BC050050 )

**Background:** This gene encodes a member of the serine/threonine protein kinase family. This kinase contains a leucine-zipper domain and is predominately expressed in neuronal cells. The phosphorylation state of this kinase in synaptic terminals was shown to be regulated by membrane depolarization via calcineurin. This kinase forms heterodimers with leucine zipper containing transcription factors, such as cAMP responsive element binding protein (CREB) and MYC, and thus may play a regulatory role in PKA or retinoic acid induced neuronal differentiation. Alternatively spliced transcript variants encoding different proteins have been described.

**Immunogen:** Fusion protein of human MAP3K12

**Applications:** ELISA, IHC

**Recommended Dilutions:** IHC: 15-50; ELISA: 1000-5000

**Host Species:** Rabbit

**Clonality:** Rabbit Polyclonal

**Isotype:** Immunogen-specific rabbit IgG

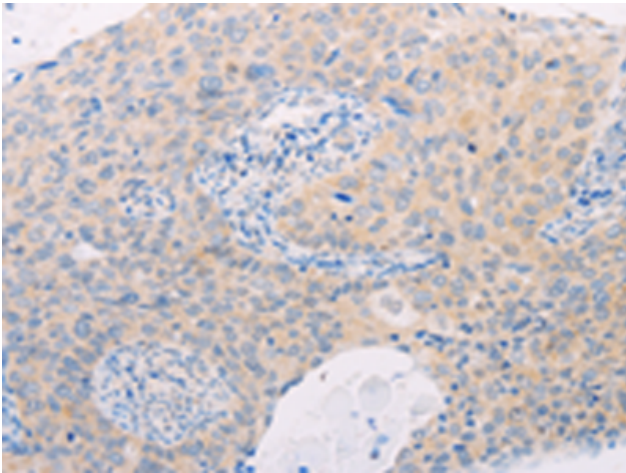
**Purification:** Antigen affinity purification

**Species Reactivity:** Human, Mouse, Rat

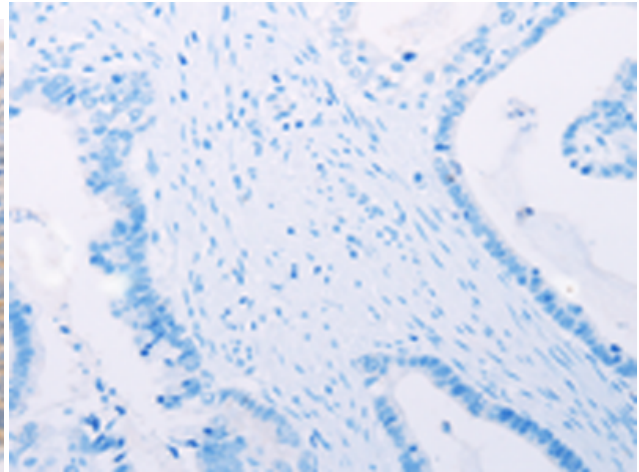
**Constituents:** PBS (without Mg<sup>2+</sup> and Ca<sup>2+</sup>), pH 7.4, 150 mM NaCl, 0.05% Sodium Azide and 40% glycerol

**Research Areas:** Signal Transduction

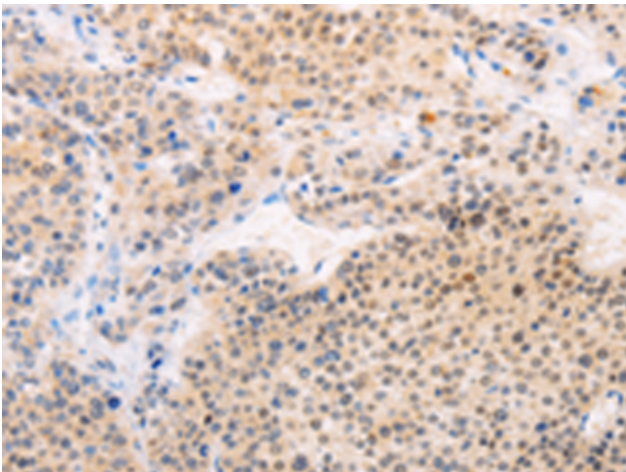
**Storage & Shipping:** Store at -20°C. Avoid repeated freezing and thawing



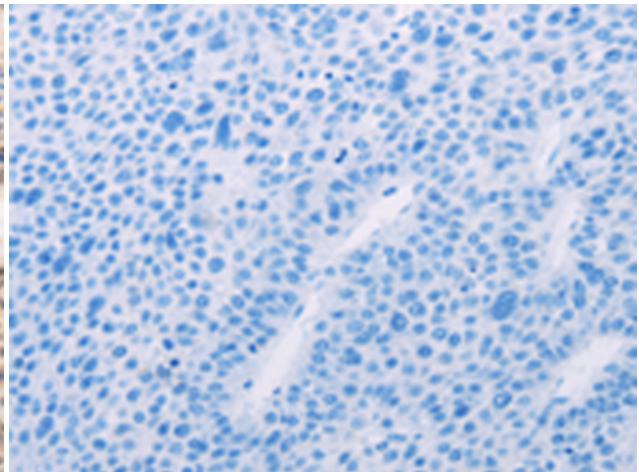
Immunohistochemistry analysis of paraffin embedded Human cervical cancer tissue using 216824(MAP3K12 Antibody) at a dilution of 1/25(Cytoplasm).



In comparison with the IHC on the left, the same paraffin-embedded Human cervical cancer tissue is first treated with the fusion protein and then with 216824(Anti-MAP3K12 Antibody) at dilution 1/25.



The image on the left is immunohistochemistry of paraffin-embedded Human liver cancer tissue using 216824(Anti-MAP3K12 Antibody) at a dilution of 1/25.



In comparison with the IHC on the left, the same paraffin-embedded Human liver cancer tissue is first treated with fusion protein and then with D221305(Anti-MAP3K12 Antibody) at dilution 1/25.