

## MAP2K2 RABBIT PAB

**Cat.#:** S213648

**Product Name:** Anti-MAP2K2 Rabbit Polyclonal Antibody

**Synonyms:** MEK2, MKK2, MAPKK2, PRKMK2

**UNIPROT ID:** P36507 (Gene Accession - NP\_109587 )

**Background:** The protein encoded by this gene is a dual specificity protein kinase that belongs to the MAP kinase kinase family. This kinase is known to play a critical role in mitogen growth factor signal transduction. It phosphorylates and thus activates MAPK1/ERK2 and MAPK2/ERK3. The activation of this kinase itself is dependent on the Ser/Thr phosphorylation by MAP kinase kinase kinases. Mutations in this gene cause cardiofaciocutaneous syndrome (CFC syndrome), a disease characterized by heart defects, mental retardation, and distinctive facial features similar to those found in Noonan syndrome. The inhibition or degradation of this kinase is also found to be involved in the pathogenesis of Yersinia and anthrax. A pseudogene, which is located on chromosome 7, has been identified for this gene.

**Immunogen:** Synthetic peptide of human MAP2K2

**Applications:** ELISA, WB, IHC

**Recommended Dilutions:** IHC: 100-300;WB: 1000-5000;ELISA: 2000-10000

**Host Species:** Rabbit

**Clonality:** Rabbit Polyclonal

**Isotype:** Immunogen-specific rabbit IgG

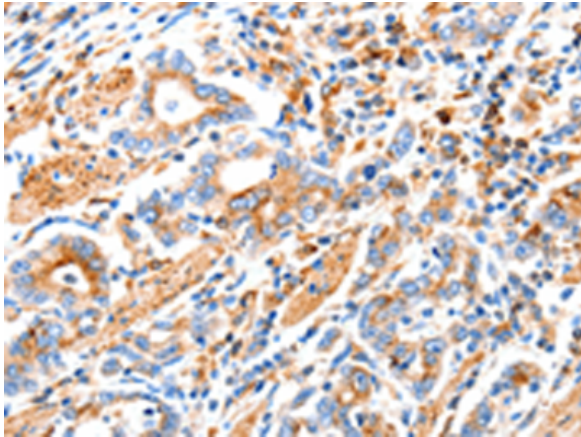
**Purification:** Antigen affinity purification

**Species Reactivity:** Human, Mouse, Rat

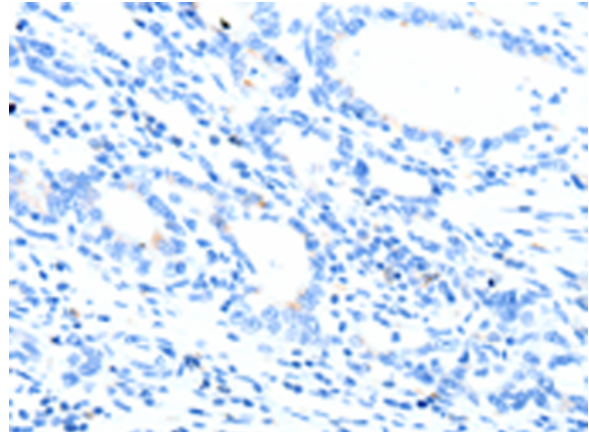
**Constituents:** PBS (without Mg<sup>2+</sup> and Ca<sup>2+</sup>), pH 7.4, 150 mM NaCl, 0.05% Sodium Azide and 40% glycerol

**Research Areas:** Signal Transduction

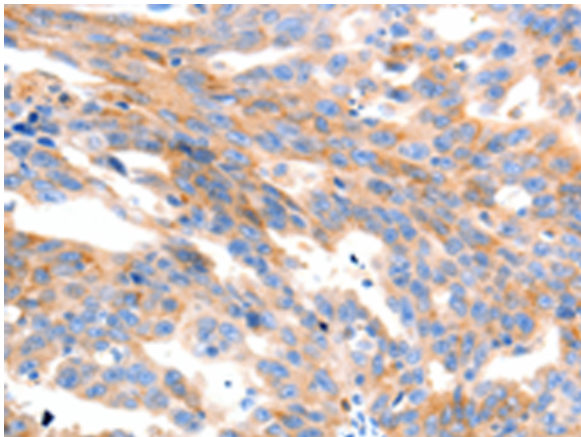
**Storage & Shipping:** Store at -20°C. Avoid repeated freezing and thawing



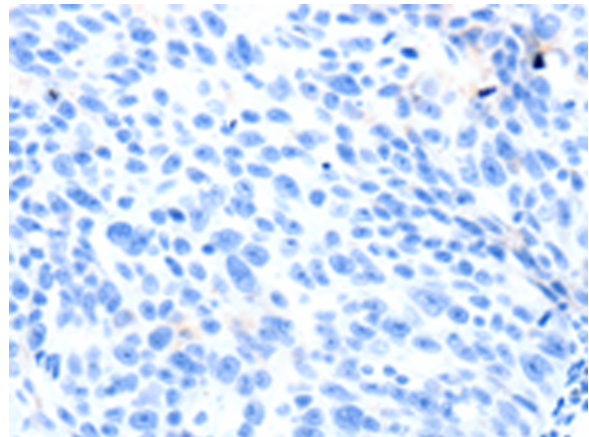
Immunohistochemistry analysis of paraffin embedded Human gastric cancer tissue using 213648(MAP2K2 Antibody) at a dilution of 1/100(Cytoplasm).



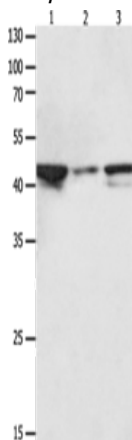
In comparison with the IHC on the left, the same paraffin-embedded Human gastric cancer tissue is first treated with the synthetic peptide and then with 213648(Anti-MAP2K2 Antibody) at dilution 1/100.



The image on the left is immunohistochemistry of paraffin-embedded Human ovarian cancer tissue using 213648(Anti-MAP2K2 Antibody) at a dilution of 1/100.



In comparison with the IHC on the left, the same paraffin-embedded Human ovarian cancer tissue is first treated with synthetic peptide and then with D160582(Anti-MAP2K2 Antibody) at dilution 1/100.



Gel: 10%SDS-PAGE, Lysate: 40 µg;  
Lane 1-3: HeLa cells, NIH/3T3 cells, Jurkat cells;  
Primary antibody: 213648(MAP2K2 Antibody) at dilution 1/1900;  
Secondary antibody: Goat anti rabbit IgG at 1/8000 dilution;  
Exposure time: 30 seconds



# Product Description

Pioneering GTPase and Oncogene Product Development since 2010

---