

MAP2 RABBIT PAB

Cat.#: S217978

Product Name: Anti-MAP2 Rabbit Polyclonal Antibody

Synonyms: MAP-2; MAP2A; MAP2B; MAP2C

UNIPROT ID: P11137 (Gene Accession - BC038857)

Background: This gene encodes a protein that belongs to the microtubule-associated protein family. The proteins of this family are thought to be involved in microtubule assembly, which is an essential step in neurogenesis. The products of similar genes in rat and mouse are neuron-specific cytoskeletal proteins that are enriched in dendrites, implicating a role in determining and stabilizing dendritic shape during neuron development. A number of alternatively spliced variants encoding distinct isoforms have been described.

Immunogen: Fusion protein of human MAP2

Applications: ELISA, WB, IHC

Recommended Dilutions: IHC: 100–300;WB: 1000–5000;ELISA: 5000–10000

Host Species: Rabbit

Clonality: Rabbit Polyclonal

Isotype: Immunogen-specific rabbit IgG

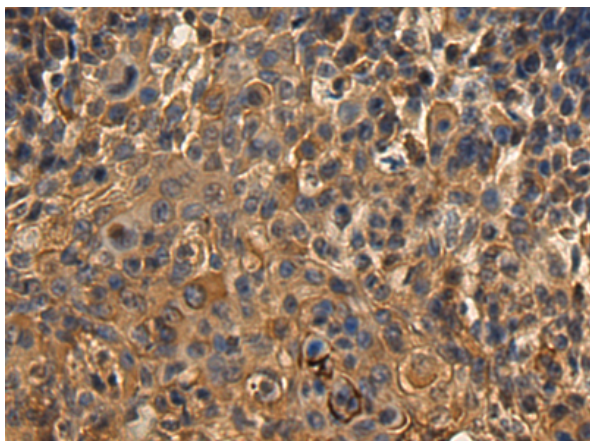
Purification: Antigen affinity purification

Species Reactivity: Human, Mouse, Rat

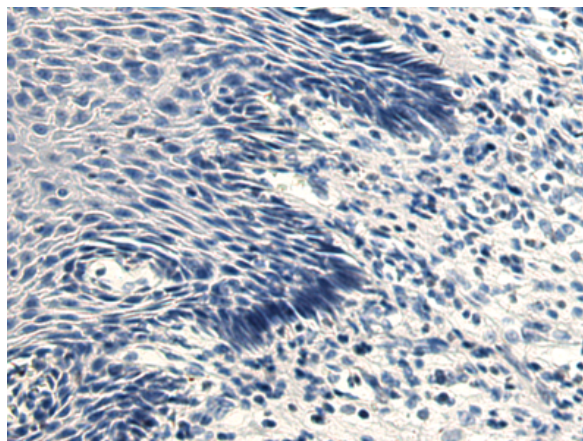
Constituents: PBS (without Mg²⁺ and Ca²⁺), pH 7.4, 150 mM NaCl, 0.05% Sodium Azide and 40% glycerol

Research Areas: Signal Transduction, Neuroscience, Stem Cells

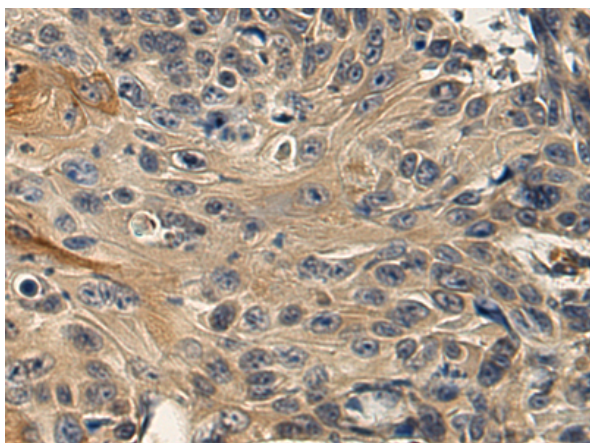
Storage & Shipping: Store at -20°C. Avoid repeated freezing and thawing



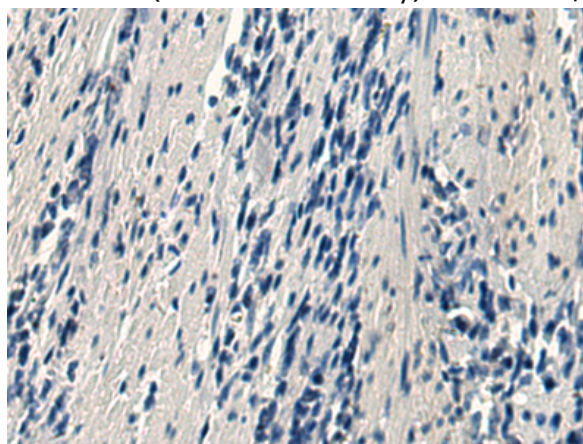
Immunohistochemistry analysis of paraffin embedded Human thyroid cancer tissue using 217978(MAP2 Antibody) at a dilution of 1/100(Cytoplasm).



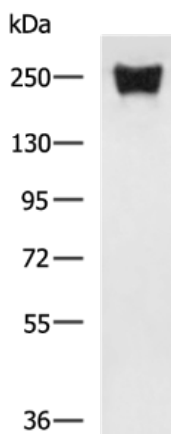
In comparison with the IHC on the left, the same paraffin-embedded Human thyroid cancer tissue is first treated with the fusion protein and then with 217978(Anti-MAP2 Antibody) at dilution 1/100.



The image on the left is immunohistochemistry of paraffin-embedded Human esophagus cancer tissue using 217978(Anti-MAP2 Antibody) at a dilution of 1/100.



In comparison with the IHC on the left, the same paraffin-embedded Human esophagus cancer tissue is first treated with fusion protein and then with D223483(Anti-MAP2 Antibody) at dilution 1/100.



Gel: 6%SDS-PAGE, Lysate: 40 µg;
 Lane: Mouse brain tissue lysate;
 Primary antibody: 217978(MAP2 Antibody) at dilution 1/700;
 Secondary antibody: HRP-conjugated Goat anti rabbit IgG at 1/5000 dilution;
 Exposure time: 3 minutes



Product Description

Pioneering GTPase and Oncogene Product Development since 2010
