

MAN1A2 RABBIT PAB

Cat.#: S219591

Product Name: Anti-MAN1A2 Rabbit Polyclonal Antibody

Synonyms: MAN1B

UNIPROT ID: O60476 (Gene Accession - BC063300)

Background: Alpha-mannosidases function at different stages of N-glycan maturation in mammalian cells. See MAN2A1 (MIM 154582) for general information.

Immunogen: Fusion protein of human MAN1A2

Applications: ELISA, WB, IHC

Recommended Dilutions: IHC: 50-200;WB: 1000-5000;ELISA: 5000-10000

Host Species: Rabbit

Clonality: Rabbit Polyclonal

Isotype: Immunogen-specific rabbit IgG

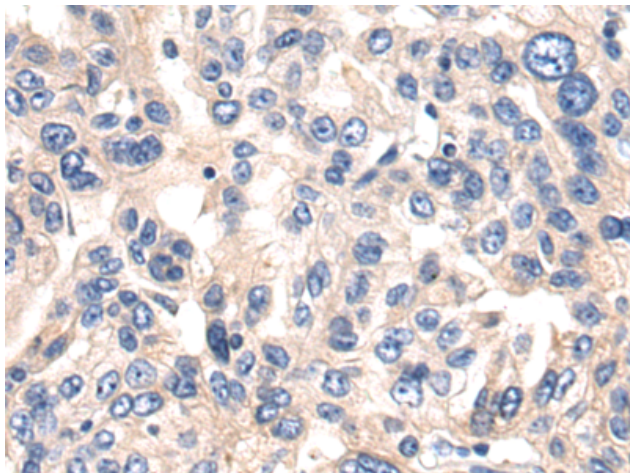
Purification: Antigen affinity purification

Species Reactivity: Human, Mouse

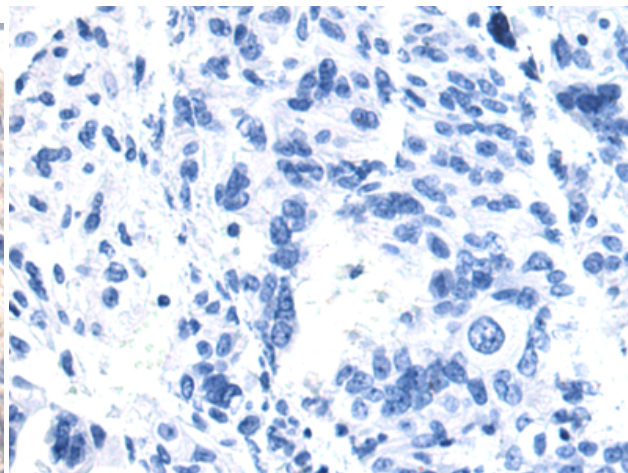
Constituents: PBS (without Mg²⁺ and Ca²⁺), pH 7.4, 150 mM NaCl, 0.05% Sodium Azide and 40% glycerol

Research Areas: Signal Transduction, Metabolism

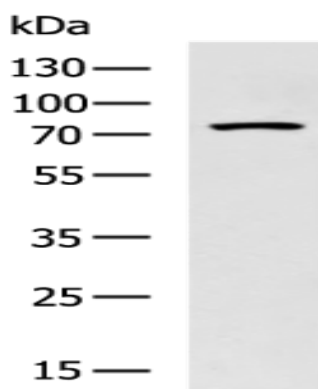
Storage & Shipping: Store at -20°C. Avoid repeated freezing and thawing



Immunohistochemistry analysis of paraffin embedded Human breast cancer tissue using 219591(MANIA2 Antibody) at a dilution of 1/80(Cytoplasm).



In comparison with the IHC on the left, the same paraffin-embedded Human breast cancer tissue is first treated with the fusion protein and then with 219591(Anti-MANIA2 Antibody) at dilution 1/80.



Gel: 8%SDS-PAGE, Lysate: 40 μ g;
Lane: Mouse skin tissue lysate;
Primary antibody: 219591(MANIA2 Antibody) at dilution 1/1000;
Secondary antibody: HRP-conjugated Goat anti rabbit IgG at 1/5000 dilution;
Exposure time: 20 seconds