

MAGEF1 RABBIT PAB

Cat.#: S214468

Product Name: Anti-MAGEF1 Rabbit Polyclonal Antibody

Synonyms:

UNIPROT ID: Q9HAY2 (Gene Accession - NP_071432)

Background: This intronless gene encodes a member of the MAGE superfamily. It is ubiquitously expressed in normal tissues and in tumor cells. This gene includes a microsatellite repeat in the coding region.

Immunogen: Synthetic peptide of human MAGEF1

Applications: ELISA, WB, IHC

Recommended Dilutions: IHC: 25-100;WB: 500-2000;ELISA: 1000-2000

Host Species: Rabbit

Clonality: Rabbit Polyclonal

Isotype: Immunogen-specific rabbit IgG

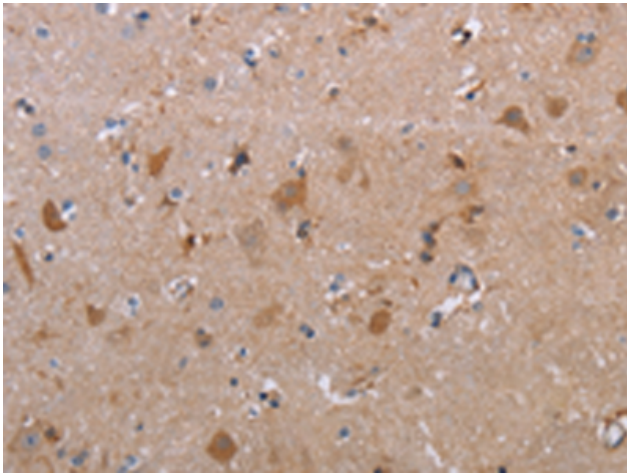
Purification: Antigen affinity purification

Species Reactivity: Human

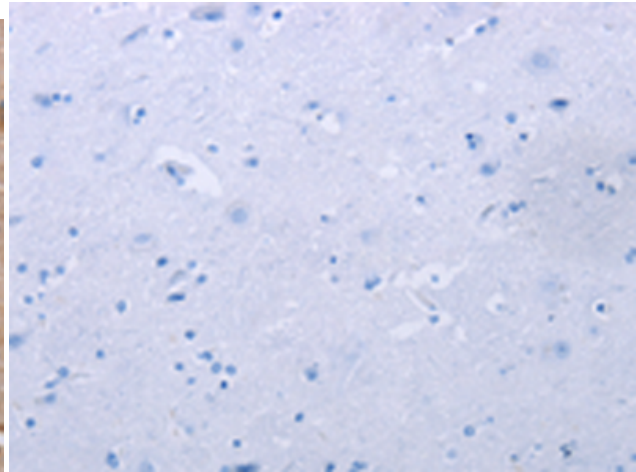
Constituents: PBS (without Mg²⁺ and Ca²⁺), pH 7.4, 150 mM NaCl, 0.05% Sodium Azide and 40% glycerol

Research Areas: Epigenetics and Nuclear Signaling

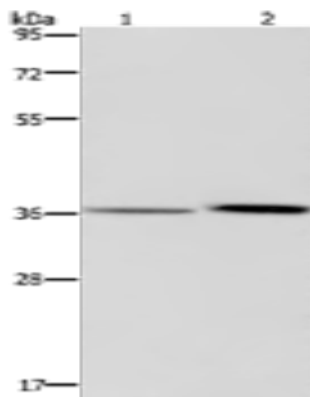
Storage & Shipping: Store at -20°C. Avoid repeated freezing and thawing



Immunohistochemistry analysis of paraffin embedded Human brain tissue using 214468(MAGEF1 Antibody) at a dilution of 1/30(Cytoplasm and Nucleus).



In comparison with the IHC on the left, the same paraffin-embedded Human brain tissue is first treated with the synthetic peptide and then with 214468(Anti-MAGEF1 Antibody) at dilution 1/30.



Gel: 8%SDS-PAGE, Lysate: 40 µg;
Lane 1-2: A549 cells, human fetal liver tissue;
Primary antibody: 214468(MAGEF1 Antibody)
at dilution 1/300;
Secondary antibody: Goat anti rabbit IgG at
1/8000 dilution;
Exposure time: 1 minute