

MAGEC2 RABBIT MAB

Cat.#: N261642

Product Name: Anti-MAGEC2 Rabbit Monoclonal Antibody

Synonyms: CT10,MAGE-C2 antigen,MAGE-E1 antigen,MAGEC2,HCA587, MAGEE1

UNIPROT ID: Q9UBF1

Background: Proposed to enhance ubiquitin ligase activity of RING-type zinc finger-containing E3 ubiquitin-protein ligases.

Immunogen: Recombinant protein of human MAGEE1

Applications: WB,IHC-P,IP

Recommended Dilutions: WB: 1/500-1/1000 IHC: 1/50-1/100 IP: 1/20

Host Species: Rabbit

Clonality: Rabbit Monoclonal

Clone ID: R04-1B9

MW: Calculated MW: 41 kDa; Observed MW: 55 kDa

Isotype: IgG

Purification: Affinity Purified

Species Reactivity: Human,Mouse

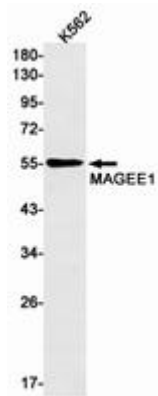
Conjugation: Unconjugated

Modification: Unmodified

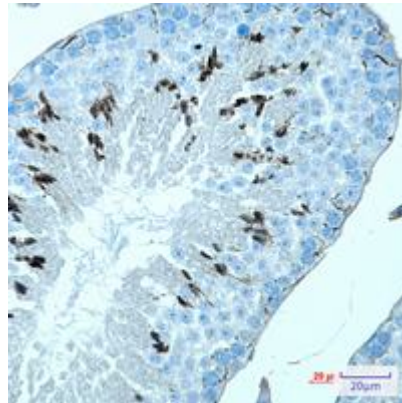
Constituents: PBS (without Mg²⁺ and Ca²⁺), pH 7.3 containing 50% glycerol, 0.5% BSA and 0.02% sodium azide

Research Areas: -

Storage & Shipping: Store at -20°C. Avoid repeated freezing and thawing



Western blot analysis of MAGEE1 in K562 lysates using MAGEE1 antibody.



Immunohistochemistry analysis of paraffin-embedded mouse testis using MAGEC2 antibody. High-pressure and temperature Sodium Citrate pH 6.0 was used for antigen retrieval.