

MAGEB5 RABBIT PAB

Cat.#: S221463

Product Name: Anti-MAGEB5 Rabbit Polyclonal Antibody

Synonyms: CT3.3; MAGE-B5

UNIPROT ID: Q9BZ81 (Gene Accession - NP_001258681)

Background: The melanoma-associated antigen (MAGE) family consists of a number of antigens recognized by cytotoxic T lymphocytes. The MAGE genes were initially isolated from different kinds of tumors and, based on their virtually exclusive tumor-specific expression in adult tissues, they have been used as targets for cancer immunotherapy. MAGE genes encode for tumor-rejection antigens that are expressed in tumors of different histologic types and in normal testis and placenta. MAGE-B5 (melanoma-associated antigen B5), also known as CT3.3 (cancer/testis antigen 3.3), is a 275 amino acid protein that contains one MAGE domain and is expressed in testis. The gene encoding MAGE-B5 maps to human chromosome X, which consists of about 153 million base pairs and nearly 1,000 genes. Color blindness, hemophilia and Duchenne muscular dystrophy are well known X chromosome-linked conditions which affect males more frequently, as males carry a single X chromosome.

Immunogen: Synthetic peptide of human MAGEB5

Applications: ELISA, IHC

Recommended Dilutions: IHC: 20-100; ELISA: 5000-10000

Host Species: Rabbit

Clonality: Rabbit Polyclonal

Isotype: Immunogen-specific rabbit IgG

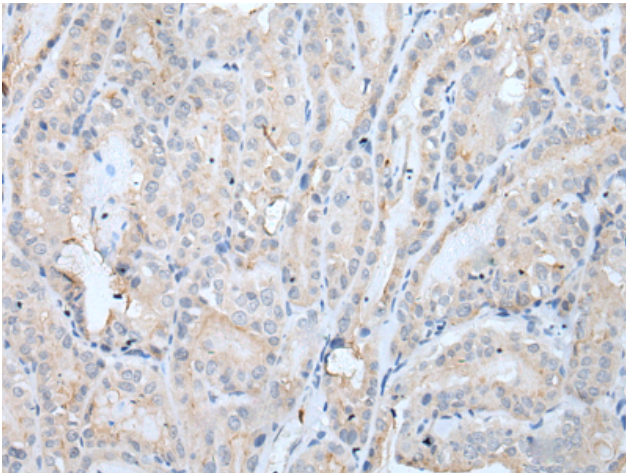
Purification: Antigen affinity purification

Species Reactivity: Human

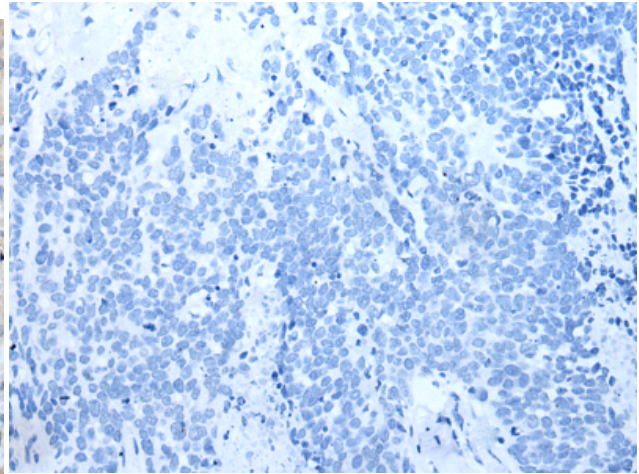
Constituents: PBS (without Mg²⁺ and Ca²⁺), pH 7.4, 150 mM NaCl, 0.05% Sodium Azide and 40% glycerol

Research Areas: Cancer

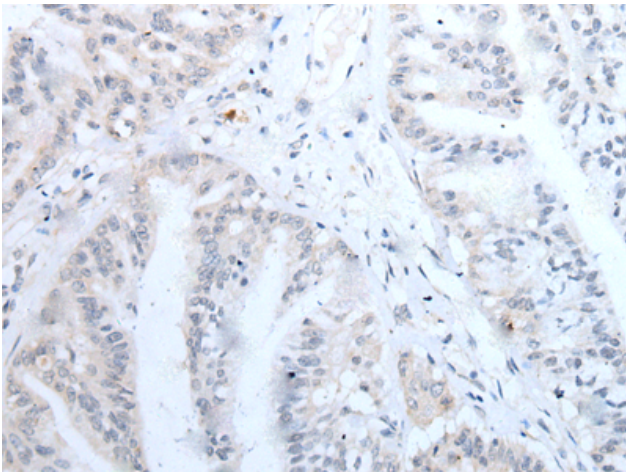
Storage & Shipping: Store at -20°C. Avoid repeated freezing and thawing



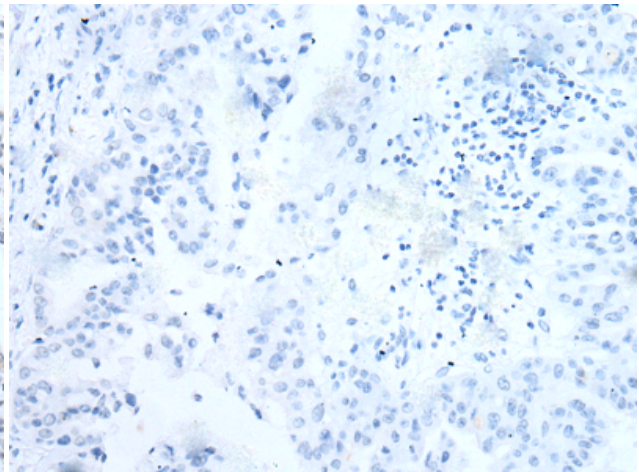
Immunohistochemistry analysis of paraffin embedded Human thyroid cancer tissue using 221463(MAGEB5 Antibody) at a dilution of 1/20(Cytoplasm and Cell membrane).



In comparison with the IHC on the left, the same paraffin-embedded Human thyroid cancer tissue is first treated with the synthetic peptide and then with 221463(Anti-MAGEB5 Antibody) at dilution 1/20.



The image on the left is immunohistochemistry of paraffin-embedded Human liver cancer tissue using 221463(Anti-MAGEB5 Antibody) at a dilution of 1/20.



In comparison with the IHC on the left, the same paraffin-embedded Human liver cancer tissue is first treated with synthetic peptide and then with D263064(Anti-MAGEB5 Antibody) at dilution 1/20.