

## MAGEA1 RABBIT PAB

**Cat.#:** S221281

**Product Name:** Anti-MAGEA1 Rabbit Polyclonal Antibody

**Synonyms:** CT1.1; MAGE1

**UNIPROT ID:** P43355 (Gene Accession - NP\_004979 )

**Background:** This gene is a member of the MAGEA gene family. The members of this family encode proteins with 50 to 80% sequence identity to each other. The promoters and first exons of the MAGEA genes show considerable variability, suggesting that the existence of this gene family enables the same function to be expressed under different transcriptional controls. The MAGEA genes are clustered at chromosomal location Xq28. They have been implicated in some hereditary disorders, such as dyskeratosis congenita.

**Immunogen:** Synthetic peptide of human MAGEA1

**Applications:** ELISA, IHC

**Recommended Dilutions:** IHC: 50-300; ELISA: 5000-10000

**Host Species:** Rabbit

**Clonality:** Rabbit Polyclonal

**Isotype:** Immunogen-specific rabbit IgG

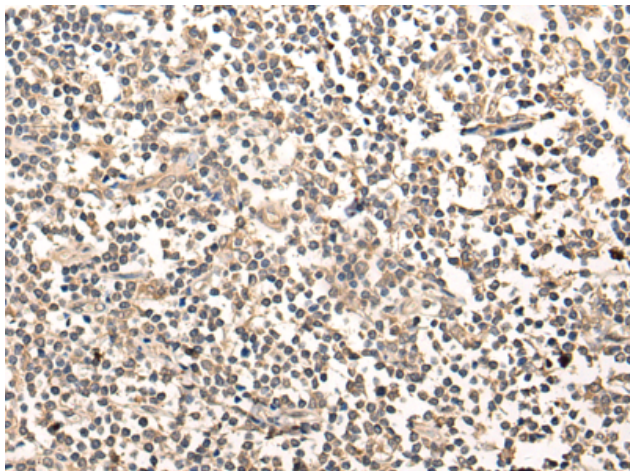
**Purification:** Antigen affinity purification

**Species Reactivity:** Human

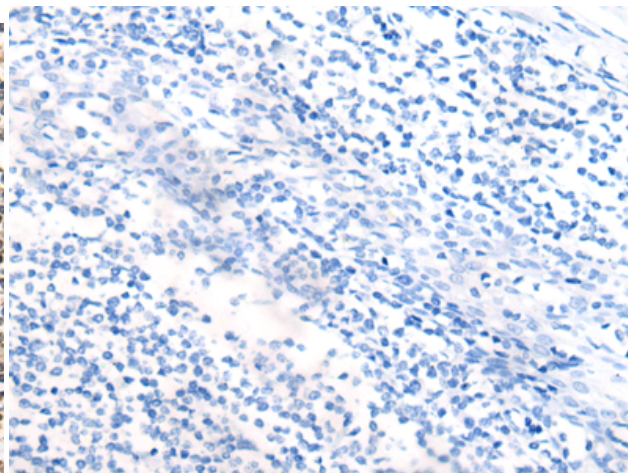
**Constituents:** PBS (without Mg<sup>2+</sup> and Ca<sup>2+</sup>), pH 7.4, 150 mM NaCl, 0.05% Sodium Azide and 40% glycerol

**Research Areas:** Cancer

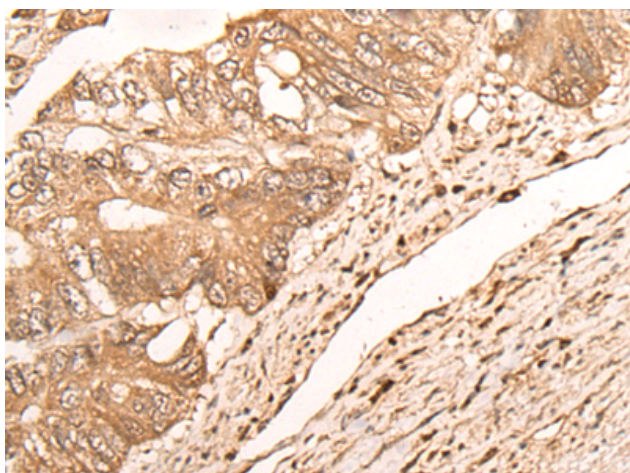
**Storage & Shipping:** Store at -20°C. Avoid repeated freezing and thawing



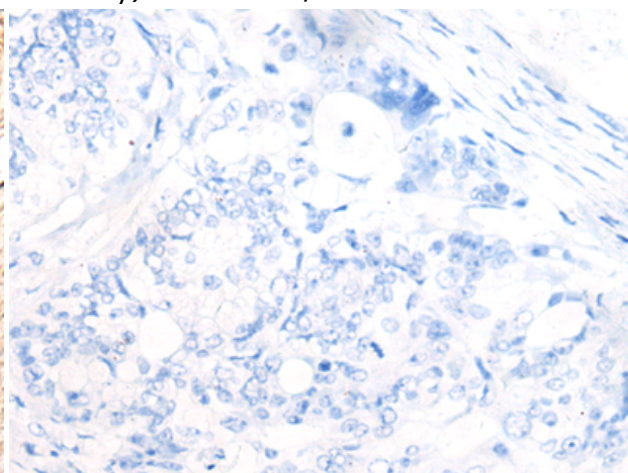
Immunohistochemistry analysis of paraffin embedded Human tonsil tissue using 221281(MAGEA1 Antibody) at a dilution of 1/65(Cytoplasm or Nucleus).



In comparison with the IHC on the left, the same paraffin-embedded Human tonsil tissue is first treated with the synthetic peptide and then with 221281(Anti-MAGEA1 Antibody) at dilution 1/65.



The image on the left is immunohistochemistry of paraffin-embedded Human colorectal cancer tissue using 221281(Anti-MAGEA1 Antibody) at a dilution of 1/65.



In comparison with the IHC on the left, the same paraffin-embedded Human colorectal cancer tissue is first treated with synthetic peptide and then with D262804(Anti-MAGEA1 Antibody) at dilution 1/65.