

MAD2L2 RABBIT MAB

Cat.#: N262484

Product Name: Anti-MAD2L2 Rabbit Monoclonal Antibody

Synonyms: REV7; FANCV; MAD2B; POLZ2

UNIPROT ID: Q9UI95

Background: Adapter protein able to interact with different proteins and involved in different biological processes. Mediates the interaction between the error-prone DNA polymerase zeta catalytic subunit REV3L and the inserter polymerase REV1, thereby mediating the second polymerase switching in translesion DNA synthesis.

Immunogen: A synthetic peptide of human Mad2L2

Applications: WB, ICC/IF, IP

Recommended Dilutions: WB: 1/500-1/1000 IF: 1/50-1/200 IP: 1/20

Host Species: Rabbit

Clonality: Rabbit Monoclonal

Clone ID: R08-7E2

MW: Calculated MW: 24 kDa; Observed MW: 24 kDa

Isotype: IgG

Purification: Affinity Purified

Species Reactivity: Human

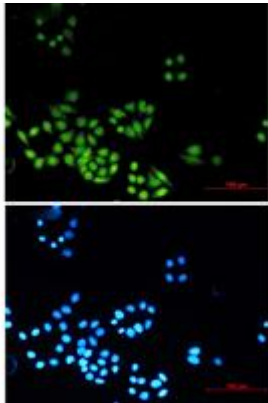
Conjugation: Unconjugated

Modification: Unmodified

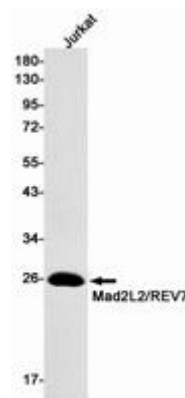
Constituents: PBS (without Mg²⁺ and Ca²⁺), pH 7.3 containing 50% glycerol, 0.5% BSA and 0.02% sodium azide

Research Areas: Cell Biology

Storage & Shipping: Store at -20°C. Avoid repeated freezing and thawing



Immunocytochemistry analysis of Mad2L2/REV7 (green) in HeLa using Mad2L2/REV7 antibody, and DAPI (blue)



Western blot analysis of Mad2L2/REV7 in Jurkat lysates using MAD2L2 antibody.