

MAD1L1 RABBIT PAB

Cat.#: S216626

Product Name: Anti-MAD1L1 Rabbit Polyclonal Antibody

Synonyms: MAD1; PIG9; TP53I9; TXBP181

UNIPROT ID: Q9Y6D9 (Gene Accession - BC009964)

Background: MAD1L1 is a component of the mitotic spindle-assembly checkpoint that prevents the onset of anaphase until all chromosome are properly aligned at the metaphase plate. MAD1L1 functions as a homodimer and interacts with MAD2L1. MAD1L1 may play a role in cell cycle control and tumor suppression. Alternative splicing results in multiple transcript variants.

Immunogen: Fusion protein of human MAD1L1

Applications: ELISA, WB, IHC

Recommended Dilutions: IHC: 25-100;WB: 500-2000;ELISA: 2000-5000

Host Species: Rabbit

Clonality: Rabbit Polyclonal

Isotype: Immunogen-specific rabbit IgG

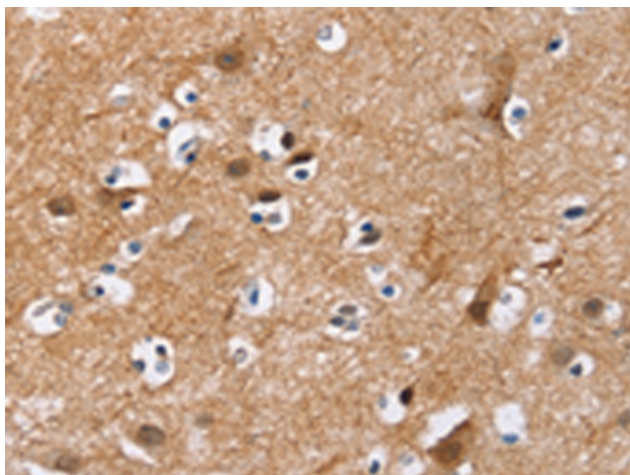
Purification: Antigen affinity purification

Species Reactivity: Human, Mouse

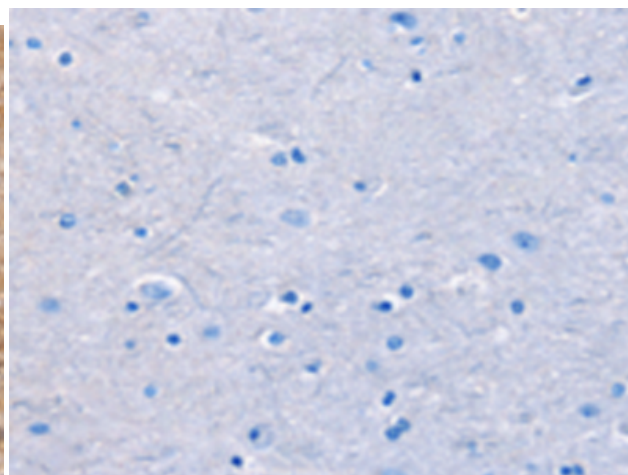
Constituents: PBS (without Mg²⁺ and Ca²⁺), pH 7.4, 150 mM NaCl, 0.05% Sodium Azide and 40% glycerol

Research Areas: Cancer

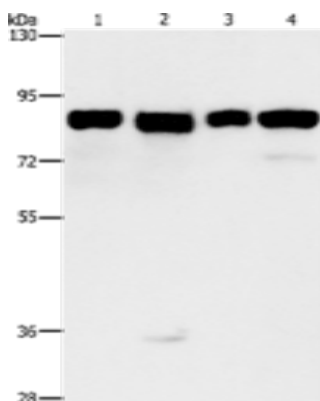
Storage & Shipping: Store at -20°C. Avoid repeated freezing and thawing



Immunohistochemistry analysis of paraffin embedded Human brain tissue using 216626(MAD1L1 Antibody) at a dilution of 1/25(Nucleus).



In comparison with the IHC on the left, the same paraffin-embedded Human brain tissue is first treated with the fusion protein and then with 216626(Anti-MAD1L1 Antibody) at dilution 1/25.



Gel: 8%SDS-PAGE, Lysate: 40 μ g;

Lane 1-4: HeLa cells, 231 cells, hepG2 cells, Raji cells;

Primary antibody: 216626(MAD1L1 Antibody) at dilution 1/500;

Secondary antibody: Goat anti rabbit IgG at 1/8000 dilution;

Exposure time: 1 second