

MACRO H2A.1 RABBIT MAB

Cat.#: N262483

Product Name: Anti-Macro H2A.1 Rabbit Monoclonal Antibody

Synonyms: H2A.y; H2A/y; mH2A1; H2AF12M; MACROH2A1.1; macroH2A1.2

UNIPROT ID: O75367

Background: Involved in stable X chromosome inactivation. Inhibits the binding of transcription factors and interferes with the activity of remodeling SWI/SNF complexes. Inhibits histone acetylation by EP300 and recruits class I HDACs, which induces an hypoacetylated state of chromatin.

Immunogen: A synthetic peptide of human macroH2A.1

Applications: WB, ICC/IF

Recommended Dilutions: WB: 1/500-1/1000 IF: 1/50-1/200

Host Species: Rabbit

Clonality: Rabbit Monoclonal

Clone ID: R04-8E5

MW: Calculated MW: 40 kDa; Observed MW: 40 kDa

Isotype: IgG

Purification: Affinity Purified

Species Reactivity: Mouse, Rat

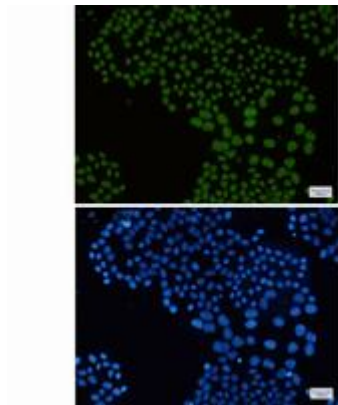
Conjugation: Unconjugated

Modification: Unmodified

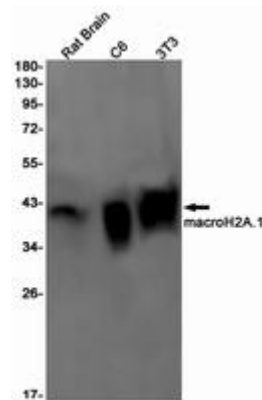
Constituents: PBS (without Mg²⁺ and Ca²⁺), pH 7.3 containing 50% glycerol, 0.5% BSA and 0.02% sodium azide

Research Areas: Epigenetics and Nuclear Signaling

Storage & Shipping: Store at -20°C. Avoid repeated freezing and thawing



Immunocytochemistry analysis of macroH2A.1 (green) in HeLa using macroH2A.1 antibody, and DAPI (blue)



Western blot analysis of macroH2A.1 in rat Brain, C6, 3T3 lysates using Macro H2A.1 antibody.