

M1AP RABBIT PAB

Cat.#: S221653

Product Name: Anti-M1AP Rabbit Polyclonal Antibody

Synonyms: D6Mm5e; C2orf65; SPATA37

UNIPROT ID: Q8TC57 (Gene Accession - NP_620159)

Background: This gene encodes a protein that is likely to function in progression of meiosis. A similar protein in mouse plays a role in gametogenesis in both sexes. Alternate splicing results in multiple transcript variants encoding different isoforms.

Immunogen: Synthetic peptide of human M1AP

Applications: ELISA, WB, IHC

Recommended Dilutions: IHC: 50-300;WB: 500-2000;ELISA: 5000-10000

Host Species: Rabbit

Clonality: Rabbit Polyclonal

Isotype: Immunogen-specific rabbit IgG

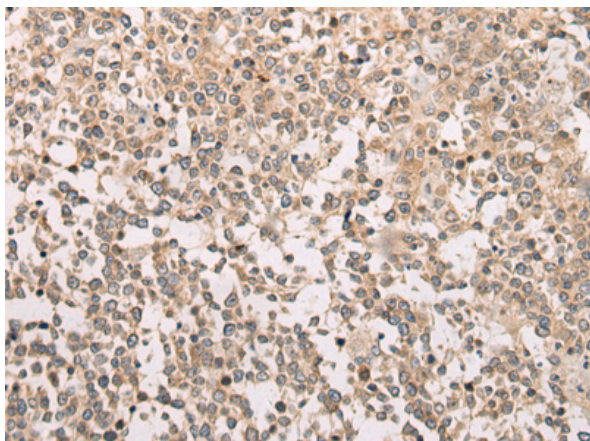
Purification: Antigen affinity purification

Species Reactivity: Human

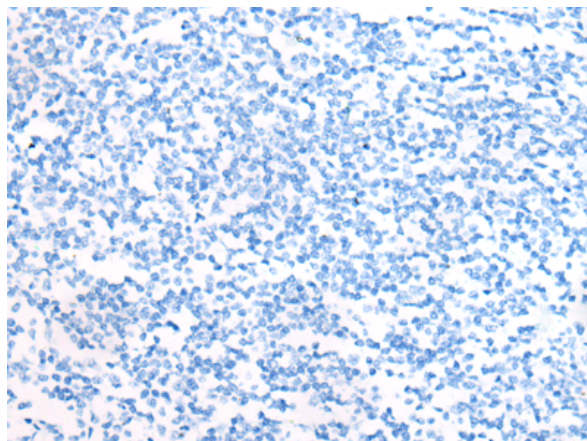
Constituents: PBS (without Mg²⁺ and Ca²⁺), pH 7.4, 150 mM NaCl, 0.05% Sodium Azide and 40% glycerol

Research Areas: Epigenetics and Nuclear Signaling

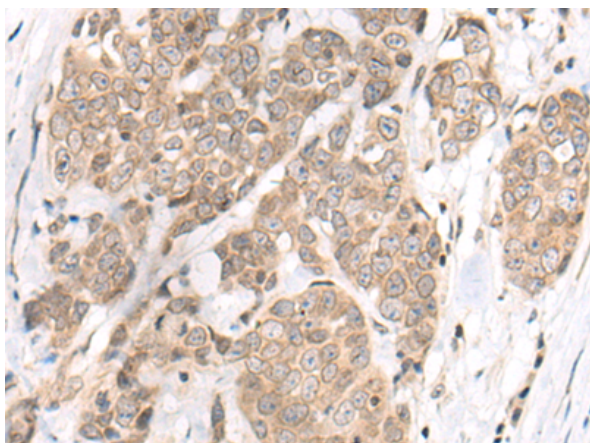
Storage & Shipping: Store at -20°C. Avoid repeated freezing and thawing



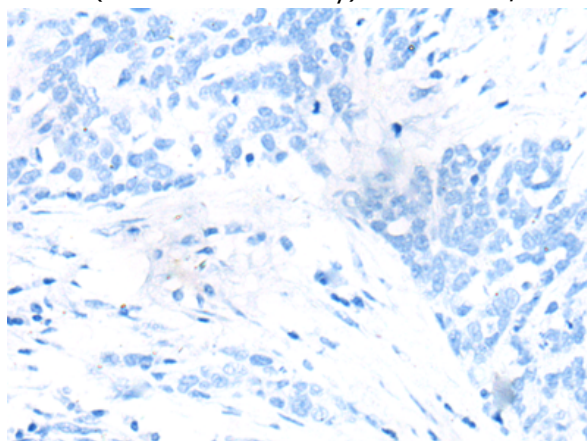
Immunohistochemistry analysis of paraffin embedded Human tonsil tissue using 221653(MIAP Antibody) at a dilution of 1/80(Cytoplasm).



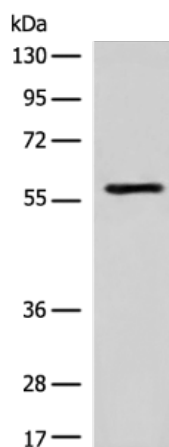
In comparison with the IHC on the left, the same paraffin-embedded Human tonsil tissue is first treated with the synthetic peptide and then with 221653(Anti-MIAP Antibody) at dilution 1/80.



The image on the left is immunohistochemistry of paraffin-embedded Human thyroid cancer tissue using 221653(Anti-MIAP Antibody) at a dilution of 1/80.



In comparison with the IHC on the left, the same paraffin-embedded Human thyroid cancer tissue is first treated with synthetic peptide and then with D263347(Anti-MIAP Antibody) at dilution 1/80.



Gel: 8%SDS-PAGE, Lysate: 40 µg;
Lane: Jurkat cell lysate;
Primary antibody: 221653(MIAP Antibody) at dilution 1/600;
Secondary antibody: Goat anti rabbit IgG at 1/8000 dilution;
Exposure time: 30 seconds



Product Description

Pioneering GTPase and Oncogene Product Development since 2010
