

LYZ RABBIT PAB

Cat.#: S216624

Product Name: Anti-LYZ Rabbit Polyclonal Antibody

Synonyms: LZM; LYZF1

UNIPROT ID: P61626 (Gene Accession - BC004147)

Background: This gene encodes human lysozyme, whose natural substrate is the bacterial cell wall peptidoglycan (cleaving the beta[1-4]glycosidic linkages between N-acetylmuramic acid and N-acetylglucosamine). Lysozyme is one of the antimicrobial agents found in human milk, and is also present in spleen, lung, kidney, white blood cells, plasma, saliva, and tears. The protein has antibacterial activity against a number of bacterial species. Missense mutations in this gene have been identified in heritable renal amyloidosis.

Immunogen: Fusion protein of human LYZ

Applications: ELISA, WB, IHC

Recommended Dilutions: IHC: 50-200;WB: 1000-5000;ELISA: 5000-10000

Host Species: Rabbit

Clonality: Rabbit Polyclonal

Isotype: Immunogen-specific rabbit IgG

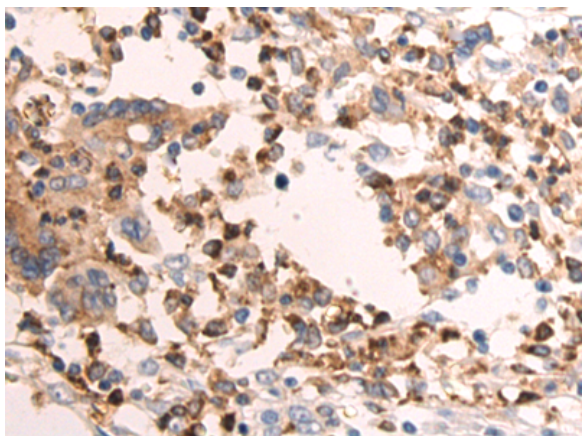
Purification: Antigen affinity purification

Species Reactivity: Human, Mouse

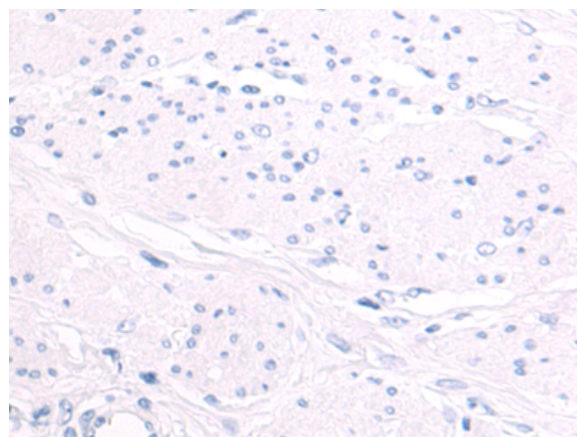
Constituents: PBS (without Mg²⁺ and Ca²⁺), pH 7.4, 150 mM NaCl, 0.05% Sodium Azide and 40% glycerol

Research Areas: Cardiovascular, Immunology

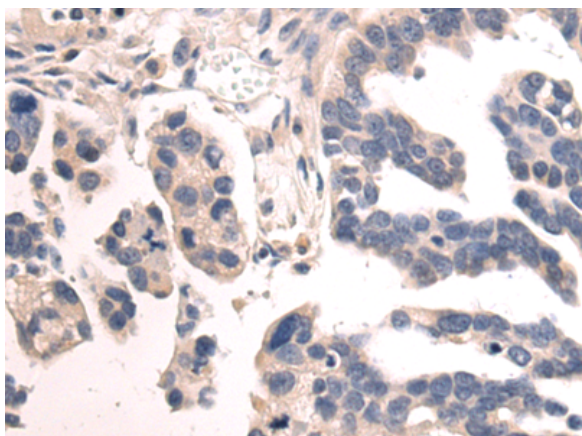
Storage & Shipping: Store at -20°C. Avoid repeated freezing and thawing



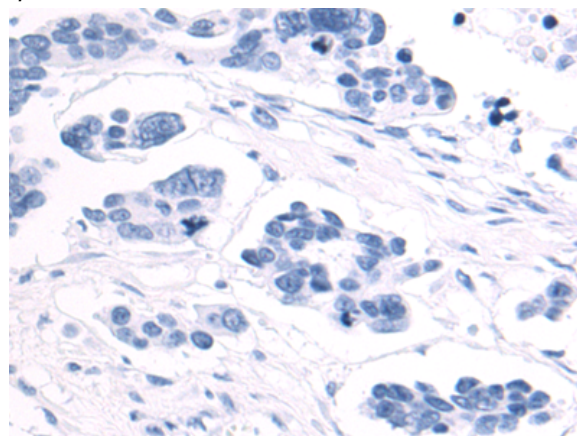
Immunohistochemistry analysis of paraffin embedded Human esophagus cancer tissue using 216624(LYZ Antibody) at a dilution of 1/90(Cytoplasm).



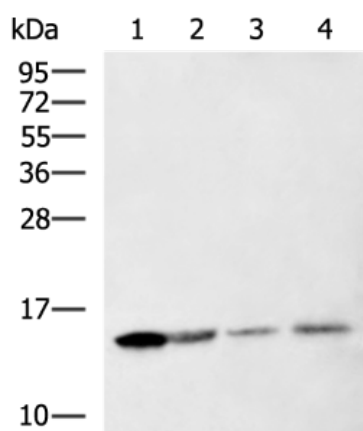
In comparison with the IHC on the left, the same paraffin-embedded Human esophagus cancer tissue is first treated with the fusion protein and then with 216624(Anti-LYZ Antibody) at dilution 1/90.



The image on the left is immunohistochemistry of paraffin-embedded Human colorectal cancer tissue using 216624(Anti-LYZ Antibody) at a dilution of 1/90.



In comparison with the IHC on the left, the same paraffin-embedded Human colorectal cancer tissue is first treated with fusion protein and then with D220936(Anti-LYZ Antibody) at dilution 1/90.



Gel: 12%SDS-PAGE, Lysate: 40 µg;
 Lane 1-4: 293T cell, Mouse kidney tissue, Hela cell,
 Mouse lung tissue lysates;
 Primary antibody: 216624(LYZ Antibody) at dilution
 1/1000;
 Secondary antibody: HRP-conjugated Goat anti
 rabbit IgG at 1/5000 dilution;
 Exposure time: 30 seconds



Product Description

Pioneering GTPase and Oncogene Product Development since 2010
