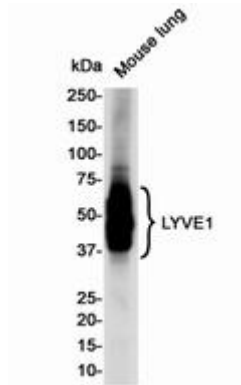
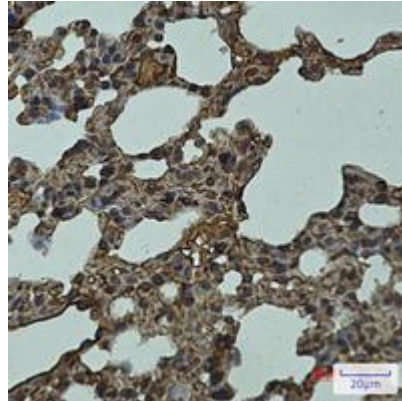


LYVE1 RABBIT MAB**Cat.#:** N262482**Product Name:** Anti-LYVE1 Rabbit Monoclonal Antibody**Synonyms:** CRSBP-1; Extracellular link domain-containing protein 1**UNIPROT ID:** Q8BHC0**Background:** Ligand-specific transporter trafficking between intracellular organelles (TGN) and the plasma membrane. Plays a role in autocrine regulation of cell growth mediated by growth regulators containing cell surface retention sequence binding (CRS).**Immunogen:** Recombinant protein of mouse LYVE1**Applications:** WB,IHC-P,IP**Recommended Dilutions:** WB: 1/500-1/1000 IHC: 1/50-1/100 IP: 1/20**Host Species:** Rabbit**Clonality:** Rabbit Monoclonal**Clone ID:** R03-3C1**MW:** Calculated MW: 35 kDa; Observed MW: 35-70 kDa**Isotype:** IgG**Purification:** Affinity Purified**Species Reactivity:** Human,Mouse**Conjugation:** Unconjugated**Modification:** Unmodified**Constituents:** PBS (without Mg²⁺ and Ca²⁺), pH 7.3 containing 50% glycerol, 0.5% BSA and 0.02% sodium azide**Research Areas:** Cardiovascular**Storage & Shipping:** Store at -20°C. Avoid repeated freezing and thawing



Western blot analysis of LYVE1 in mouse Lung lysates using LYVE1 antibody.



Immunohistochemistry analysis of paraffin-embedded mouse lung using LYVE1 antibody. High-pressure and temperature Sodium Citrate pH 6.0 was used for antigen retrieval.