

LYSOZYME RABBIT MAB

Cat.#: N262481

Product Name: Anti-Lysozyme Rabbit Monoclonal Antibody

Synonyms: LZM; LYZF1

UNIPROT ID: P61626

Background: Lysozymes have primarily a bacteriolytic function; those in tissues and body fluids are associated with the monocyte-macrophage system and enhance the activity of immunoagents.

Immunogen: A synthetic peptide of human Lysozyme

Applications: WB, ICC/IF, IP

Recommended Dilutions: WB: 1/500-1/1000 IF: 1/50-1/200 IP: 1/20

Host Species: Rabbit

Clonality: Rabbit Monoclonal

Clone ID: R09-9D6

MW: Calculated MW: 17 kDa; Observed MW: 17 kDa

Isotype: IgG

Purification: Affinity Purified

Species Reactivity: Human, Mouse, Rat

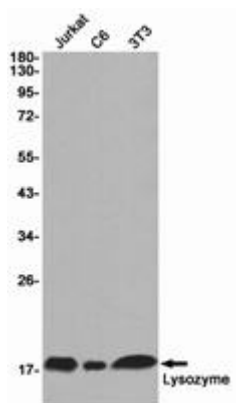
Conjugation: Unconjugated

Modification: Unmodified

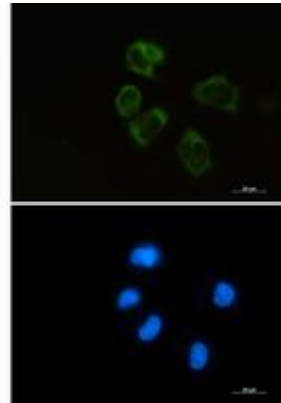
Constituents: PBS (without Mg²⁺ and Ca²⁺), pH 7.3 containing 50% glycerol, 0.5% BSA and 0.02% sodium azide

Research Areas: Cell Biology

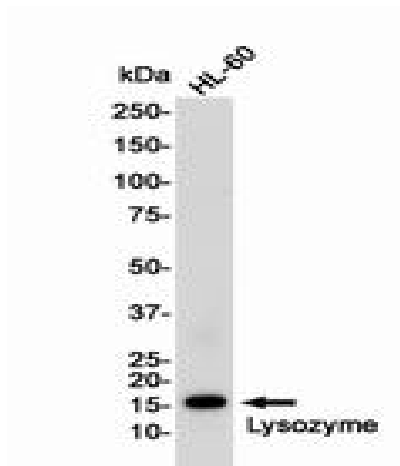
Storage & Shipping: Store at -20°C. Avoid repeated freezing and thawing



Western blot analysis of Lysozyme in Jurkat, C6, 3T3 lysates using Lysozyme antibody



Immunocytochemistry analysis of Lysozyme (green) in HEPG2 using Lysozyme antibody, and DAPI (blue).



Western blot analysis of Lysozyme in HL-60 lysates using Lysozyme antibody.