

## LYRM2 RABBIT PAB

**Cat.#:** S218785

**Product Name:** Anti-LYRM2 Rabbit Polyclonal Antibody

**Synonyms:** DJ12208.2

**UNIPROT ID:** Q9NU23 (Gene Accession - BC009782 )

**Background:** The Lyr motif found in the LYR-motif containing protein family is similar to that found in the sacchromyces cerevisiae protein ISD11, an iron-sulfur protein in the mitochondria that is thought to play a role in iron homeostasis. No known function has been assigned to LYRM2, although LYRM1 is thought to be involved in preadipocyte progression and LYRM3 has been suggested to be a candidate gene for the branchio-oto-renal (BOR) syndrome.

**Immunogen:** Fusion protein of human LYRM2

**Applications:** ELISA, IHC

**Recommended Dilutions:** IHC: 50–300; ELISA: 5000–10000

**Host Species:** Rabbit

**Clonality:** Rabbit Polyclonal

**Isotype:** Immunogen-specific rabbit IgG

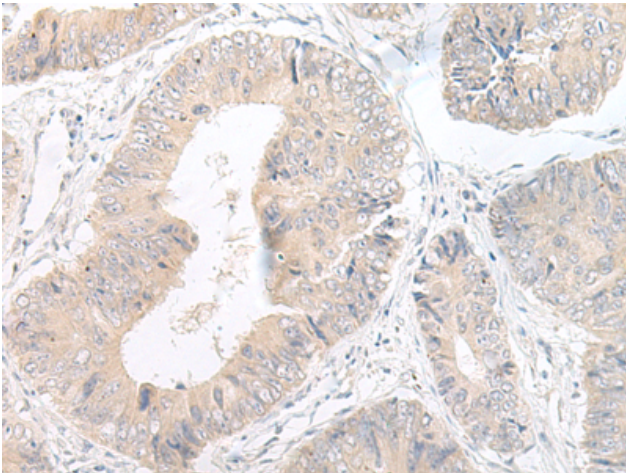
**Purification:** Antigen affinity purification

**Species Reactivity:** Human, Mouse, Rat

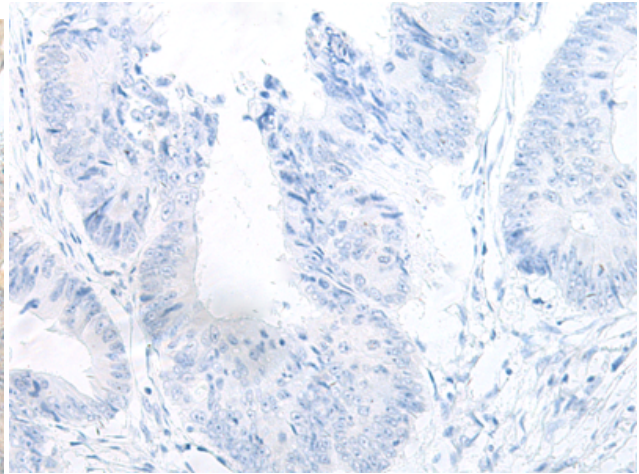
**Constituents:** PBS (without Mg<sup>2+</sup> and Ca<sup>2+</sup>), pH 7.4, 150 mM NaCl, 0.05% Sodium Azide and 40% glycerol

**Research Areas:** Cell Biology

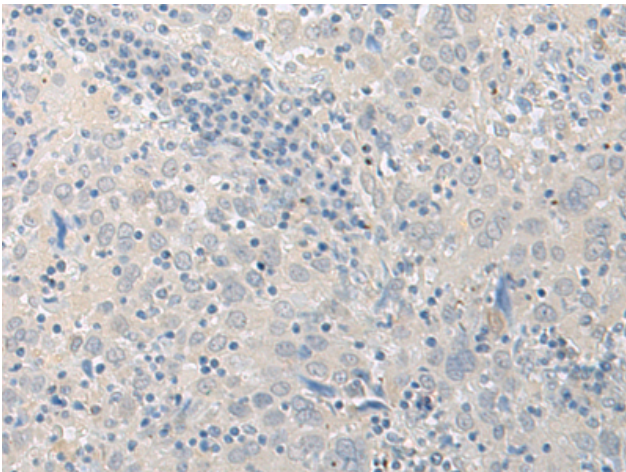
**Storage & Shipping:** Store at -20°C. Avoid repeated freezing and thawing



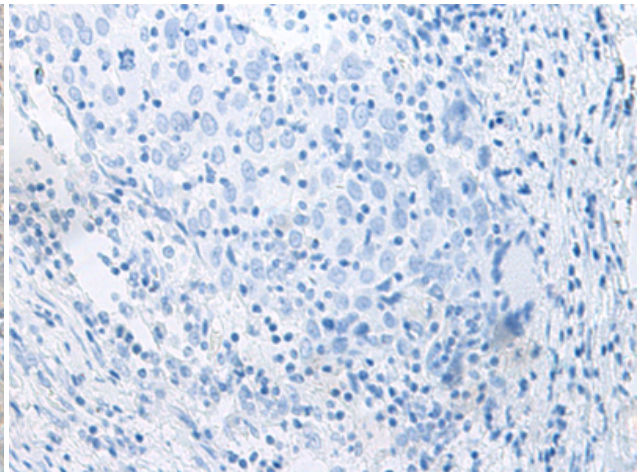
Immunohistochemistry analysis of paraffin embedded Human colorectal cancer tissue using 218785(LYRM2 Antibody) at a dilution of 1/50(Cytoplasm).



In comparison with the IHC on the left, the same paraffin-embedded Human colorectal cancer tissue is first treated with the fusion protein and then with 218785(Anti-LYRM2 Antibody) at dilution 1/50.



The image on the left is immunohistochemistry of paraffin-embedded Human cervical cancer tissue using 218785(Anti-LYRM2 Antibody) at a dilution of 1/50.



In comparison with the IHC on the left, the same paraffin-embedded Human cervical cancer tissue is first treated with fusion protein and then with D225185(Anti-LYRM2 Antibody) at dilution 1/50.