

LYRIC (2E4) MOUSE MAB

Cat.#: N261194

Product Name: Anti-LYRIC (2E4) Mouse Monoclonal Antibody

Synonyms: MTDH; AEG1; LYRIC; Protein LYRIC; 3D3/LYRIC; Astrocyte elevated gene-1 protein; AEG-1; Lysine-rich CEACAM1 co-isolated protein; Metadherin; Metastasis adhesion protein

UNIPROT ID: Q86UE4

Background: Downregulates SLC1A2/EAAT2 promoter activity when expressed ectopically. Activates the nuclear factor kappa-B (NF-kappa-B) transcription factor. Promotes anchorage-independent growth of immortalized melanocytes and astrocytes which is a key component in tumor cell expansion.

Immunogen: Purified recombinant fragment of human Metadherin expressed in E. Coli.

Applications: WB,IHC-P,FC

Recommended Dilutions: WB: 1/500-1/1000 IHC: 1/50-1/100 FC: 1/50-1/100

Host Species: Mouse

Clonality: Mouse Monoclonal

Clone ID: 2E4-D8-D11

MW: Calculated MW: 64 kDa; Observed MW: 64 kDa

Isotype: IgG1

Purification: Ascitic Fluid

Species Reactivity: Human

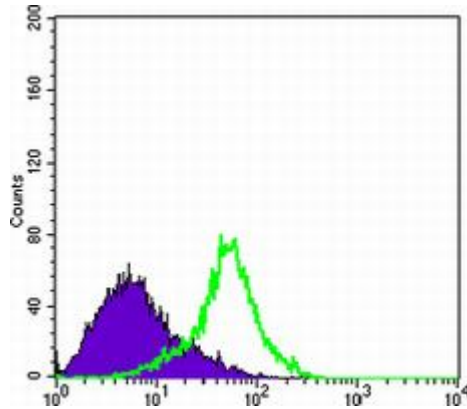
Conjugation: Unconjugated

Modification: Unmodified

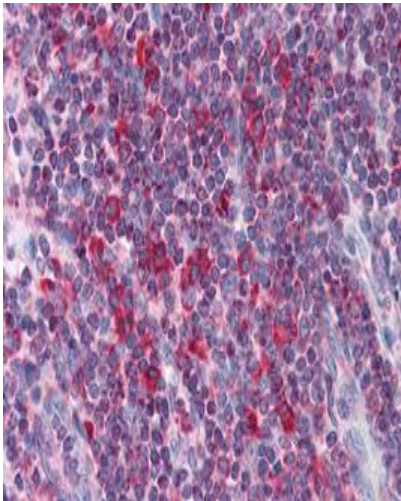
Constituents: PBS (without Mg²⁺ and Ca²⁺), pH 7.3 containing 50% glycerol, 0.5% BSA and 0.02% sodium azide

Research Areas: Signal Transduction

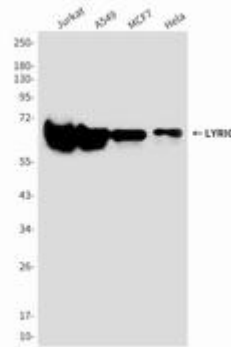
Storage & Shipping: Store at -20°C. Avoid repeated freezing and thawing



Flow cytometry analysis of Hela cells stained with Metadherin antibody (green) and negative control (purple).



Immunohistochemistry analysis of paraffin-embedded Human Liver tissues using Metadherin antibody. High-pressure and temperature Sodium Citrate pH 6.0 was used for antigen retrieval.



Western blot analysis of Lyric/Metadherin in Jurkat, A549, MCF-7 and Hela lysates using Lyric/Metadherin antibody.