

LYPD4 RABBIT PAB

Cat.#: S218172

Product Name: Anti-LYPD4 Rabbit Polyclonal Antibody

Synonyms: SMR

UNIPROT ID: Q6UWN0 (Gene Accession - BC034629)

Background: Predicted to be located in extracellular region and plasma membrane. Predicted to be active in plasma membrane raft. Predicted to be anchored component of plasma membrane. [provided by Alliance of Genome Resources, Apr 2022]

Immunogen: Fusion protein of human LYPD4

Applications: ELISA, IHC

Recommended Dilutions: IHC: 100-300; ELISA: 5000-10000

Host Species: Rabbit

Clonality: Rabbit Polyclonal

Isotype: Immunogen-specific rabbit IgG

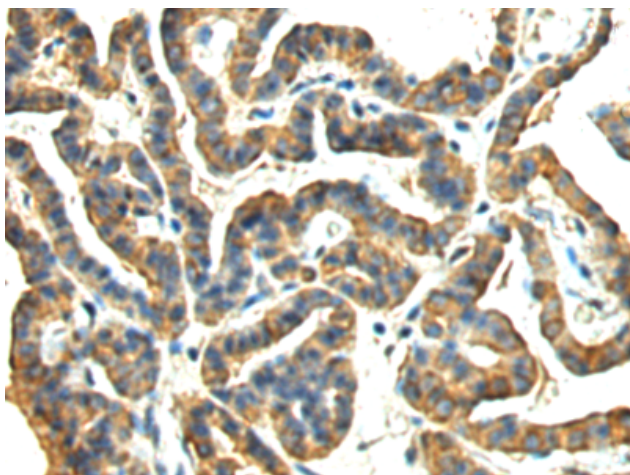
Purification: Antigen affinity purification

Species Reactivity: Human

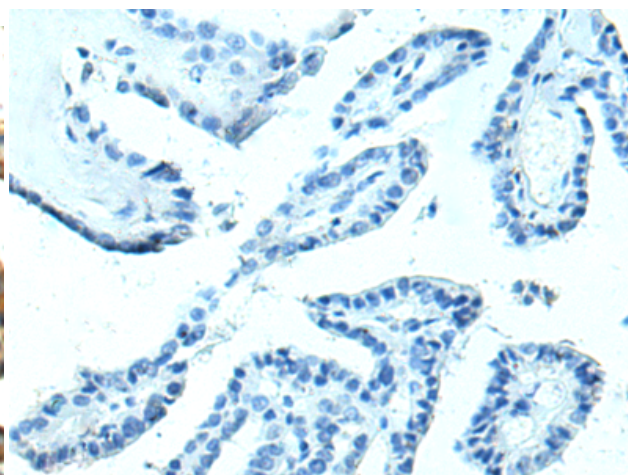
Constituents: PBS (without Mg²⁺ and Ca²⁺), pH 7.4, 150 mM NaCl, 0.05% Sodium Azide and 40% glycerol

Research Areas: Cell Biology

Storage & Shipping: Store at -20°C. Avoid repeated freezing and thawing



Immunohistochemistry analysis of paraffin embedded Human thyroid cancer tissue using 218172(LYPD4 Antibody) at a dilution of 1/110(Cell membrane).



In comparison with the IHC on the left, the same paraffin-embedded Human thyroid cancer tissue is first treated with the fusion protein and then with 218172(Anti-LYPD4 Antibody) at dilution 1/110.